

# Exoplanets

Lecture 8  
24.11.2020  
MFF UK

# Outline

- Discussion about WD planets
- Discussion about exoplanetary evolution processes
- Discussion about exoplanetary structure

# Exoplanets

Lecture 9

01 December 2020

MFF UK

# Outline

- Evolution of exoplanetary systems
- Frequency of exoplanets
- Interesting exoplanetary systems



# Formation of exoplanetary systems

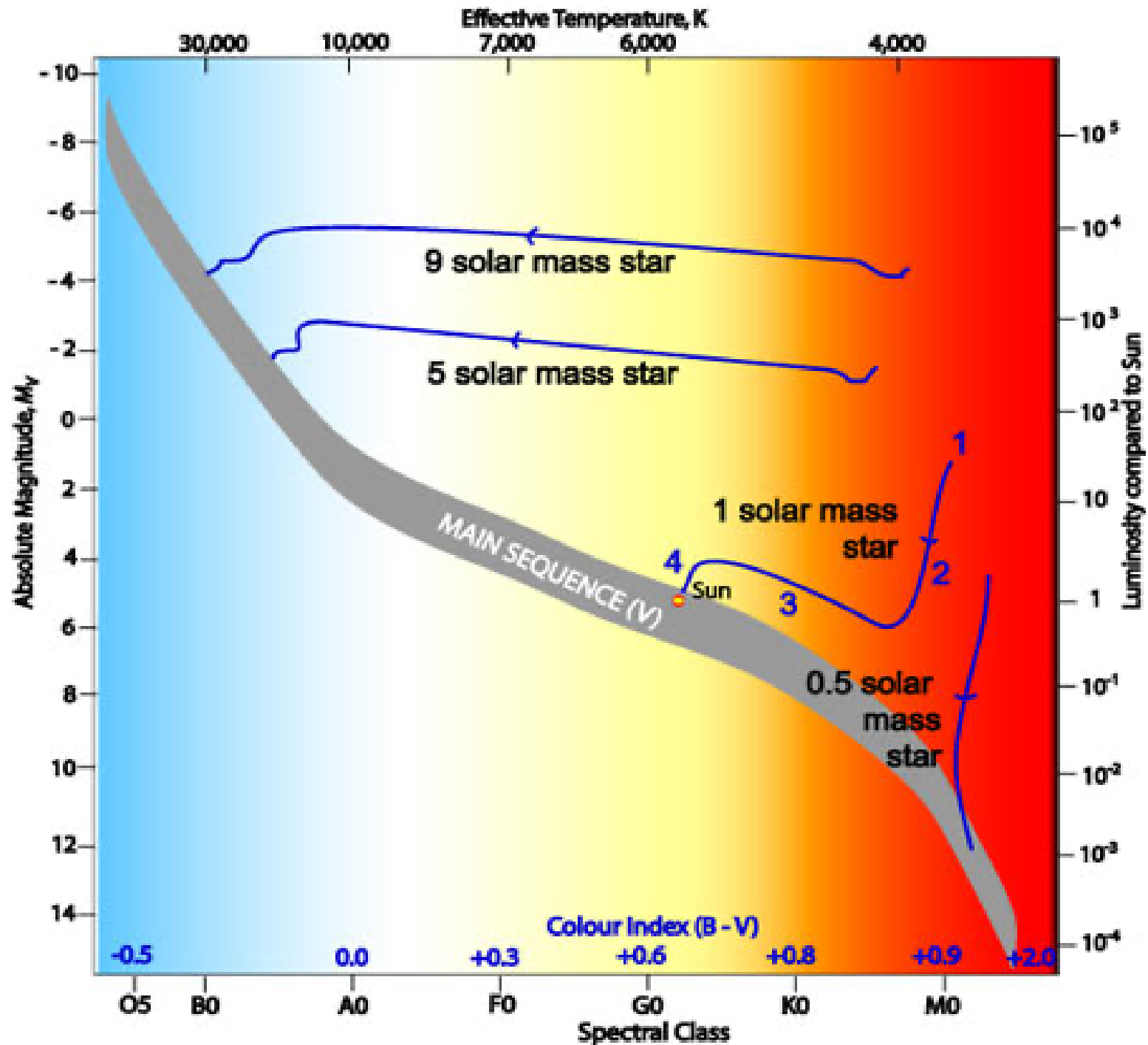
- Evolution in protostars with discs
- Two main theories:
  - Core accretion (Safronov 1969, Pollack 1996, ...)
  - Gravitational instability (Kuiper 1951, Cameron 1978 )
- How do theories apply to real exoplanetary systems?

Let`s start from the beginning  
(first steps in the planetary systems  
evolution)

# Hayashi track (new system is born)

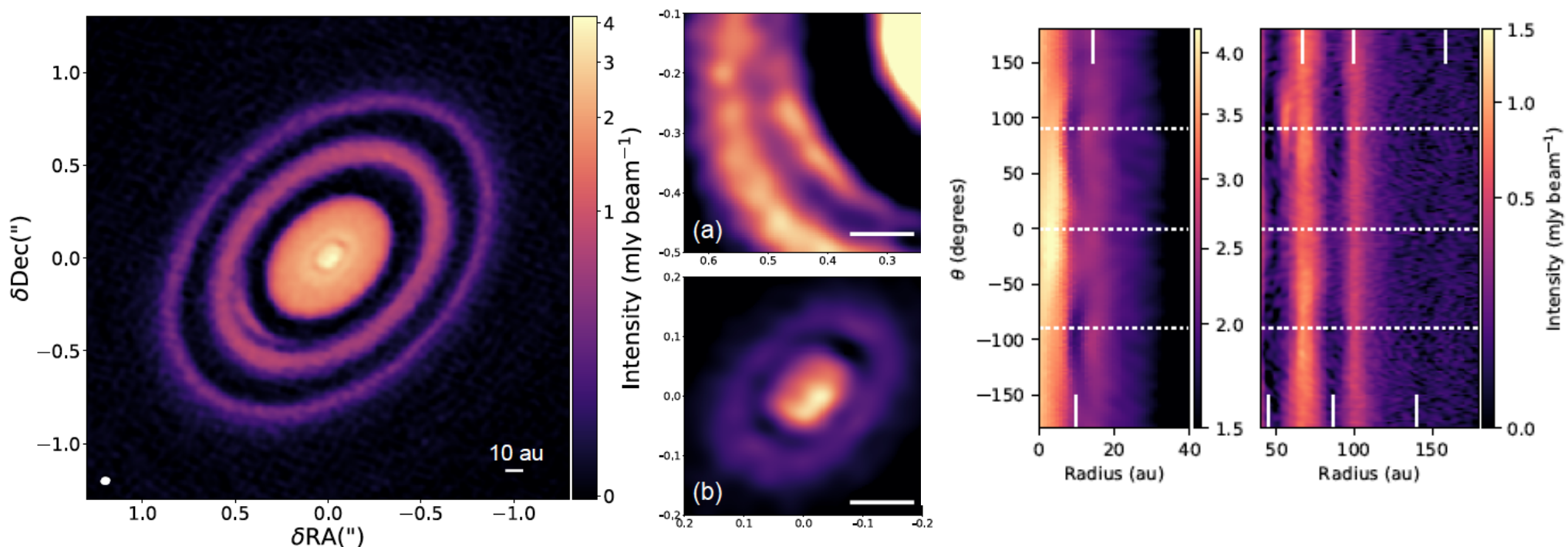
- Track in the HR diagram along which T Tauri stars move towards the MS
- The time and track depend on the mass of the young star
- Hayashi,  
<http://articles.adsabs.harvard.edu/pdf/1961PASJ...13..450H>

# Theoretical Hayashi Tracks of Protostars



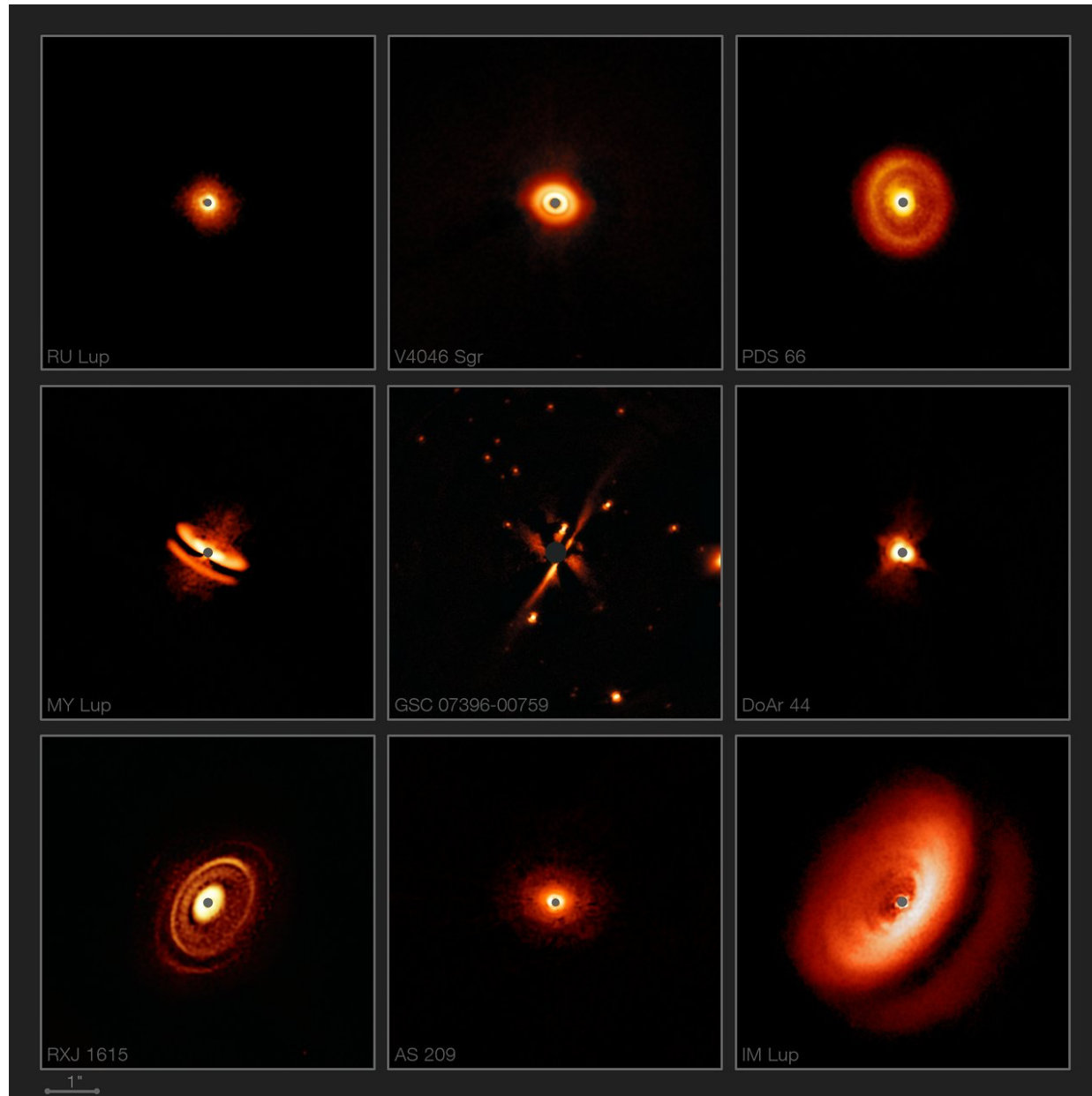
# HD163296 disc with planets

- Structures in the disc observed by ALMA
- Rings formed by planetary system
- <https://arxiv.org/pdf/1812.04047.pdf>



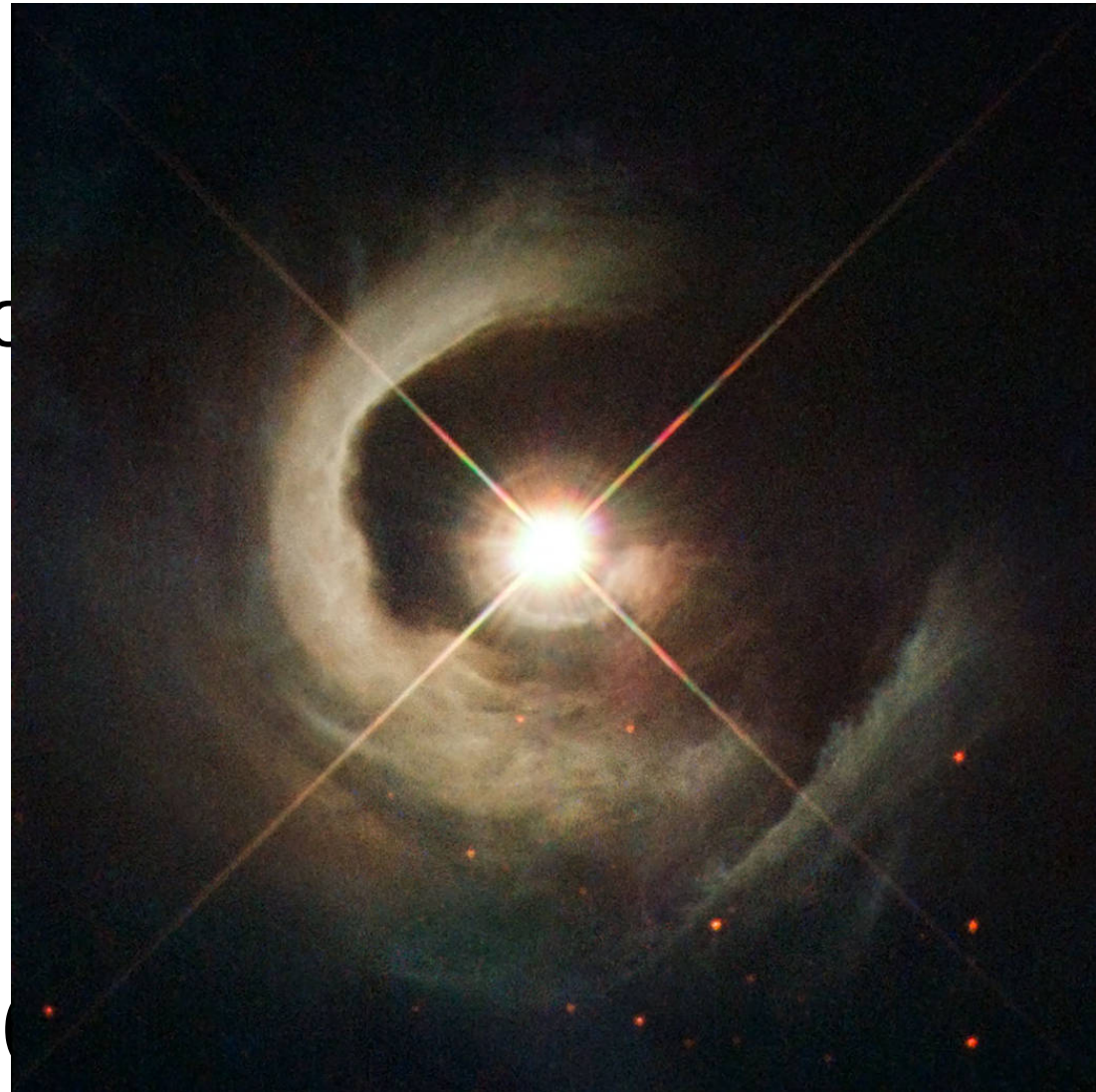
From Isella et al. 2018, <https://arxiv.org/pdf/1812.04047.pdf>

# Young stars with discs



# New star is born

- T Tauri type stars
  - young, active stars
  - collapsing gravitational
  - masses  $< 3 M_{\odot}$
  - with discs!
  - Li abundant
- T Tauri stars become later main sequence



stars Image: V1331 Cyg a young T Tauri star – pole onwards  
<https://www.nasa.gov/content/goddard/hubble-sees-a-young-star-take-center-stage>



# Disc imaging

- PDA 70
  - imaged by VLT (NACO, SPHERE)
  - young object (5.4 My)
  - disc present
  - particle grains estimated
- Hosts a planet
  - anything between

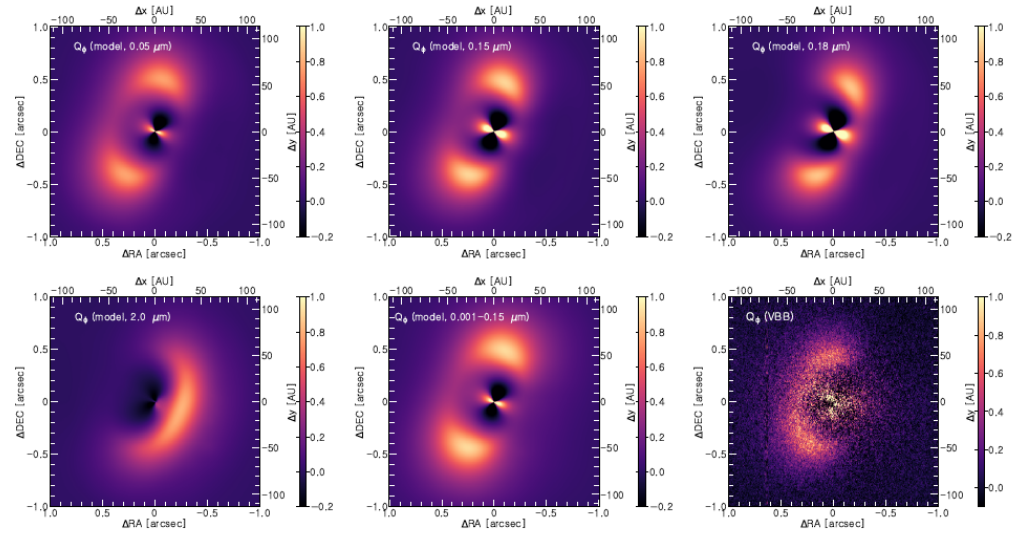


Fig. 8. Convolved ray-traced  $Q_\lambda$ -images evaluated at  $0.7 \mu\text{m}$  using different grain size distributions. Successively, the central source polarisation emerging from the unresolved inner disk (radius 2 au) was subtracted using a  $U_\lambda$ -minimisation. The lower right panel shows the VBB observation, for comparison. North is up and East is to the left.

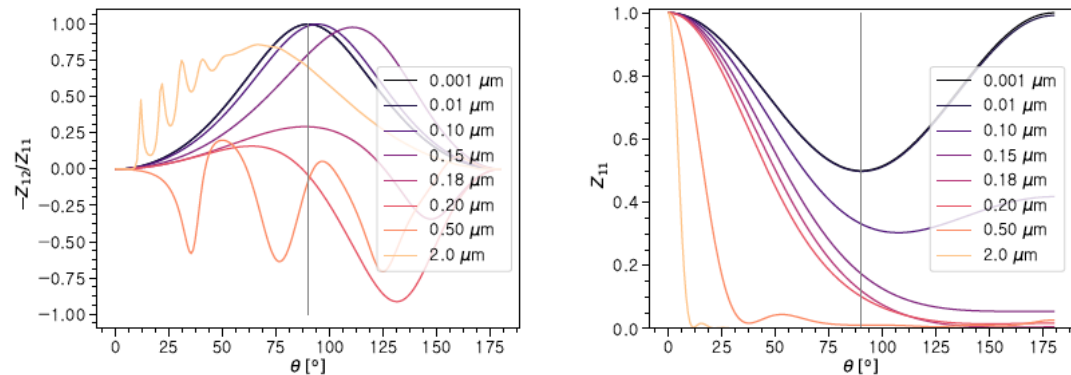
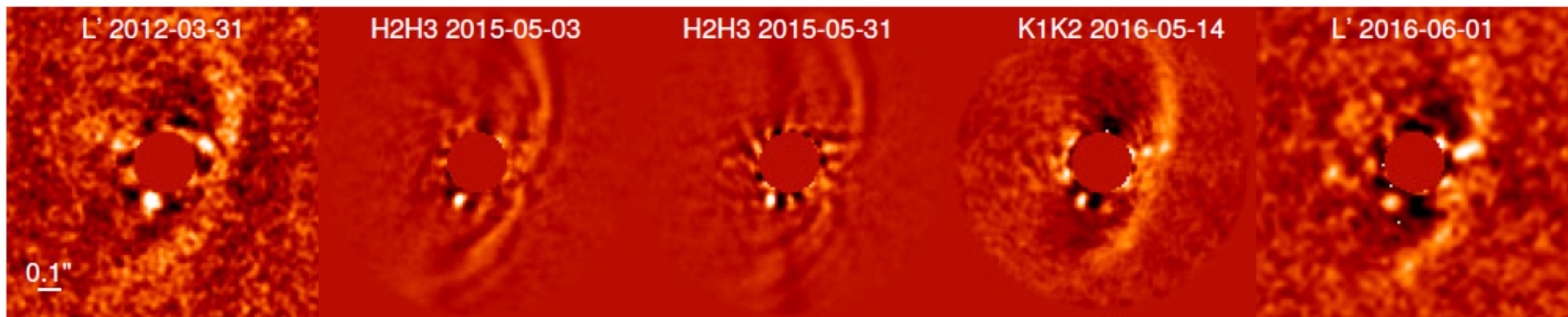


Fig. 7. Linear polarisation degrees for silicates of different (semi-mono dispersive) grain sizes (left), and their phase function (right, not  $Z_{11}(0)$ ). The curves were computed for an observing wavelength of  $0.7 \mu\text{m}$ .



# PD 70b

- And here is the planet....



M. Keppler et al. 2018 - <https://www.eso.org/public/archives/releases/sciencepapers/eso1821/eso1821a.pdf>

Planets are forming

# Disc instability

- Gravitational collapse of the gas from the disc material
- Usually drives planet formation in outer parts of the disc
- Fairly fast process around a few thousands years
- Jeans mass – if the mass of the object is larger than the  $M > \left(\frac{5kT}{Gm}\right)^{3/2} \left(\frac{3}{4\pi\rho}\right)^{1/2}$  gravitational force starts to dominate

# Core accretion

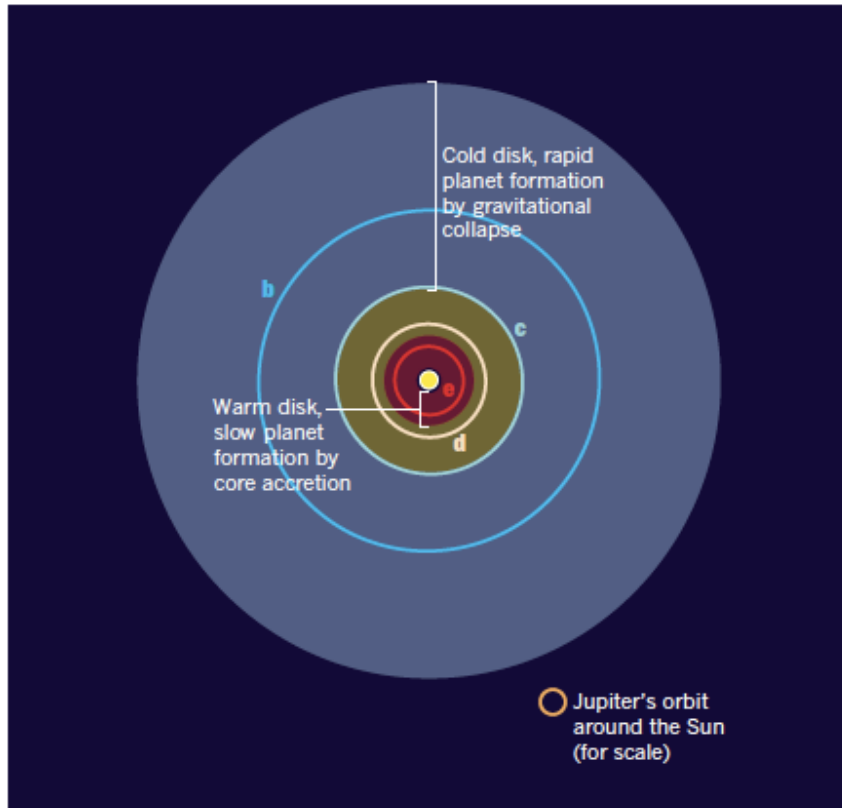
- Safronov 1972, Pollack 1996
- Small solid dust grains (less than micro meters) collide and grow into larger particles (dozens of kilometers) – planetesimals
- Gravity starts to shape a planetesimal
- Planetesimal grows into planetary core
- Usually drives formation in warm inner disc

# Real exoplanets and formation hypothesis

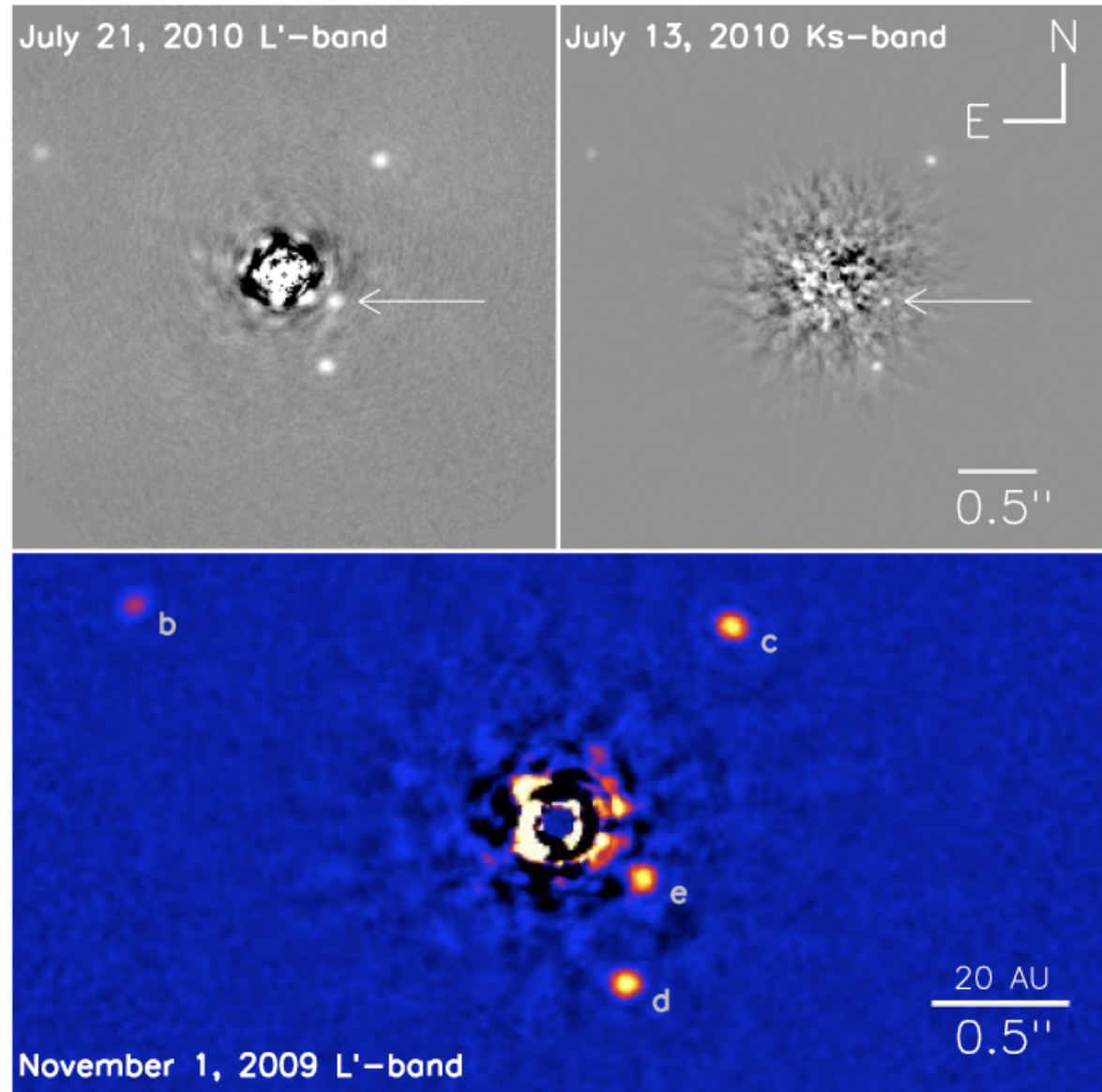
# The case of HR8799

- Intriguing system HR 8799 – A type 1.5 Solar masses star
- The system includes 4 gas giants within
- Masses between 5-10 Jupiter masses
- How did they form?
  - Core accretion, gravitational collapse or both?
  - were they migrating inwards or onwards?

# The HR8799 system

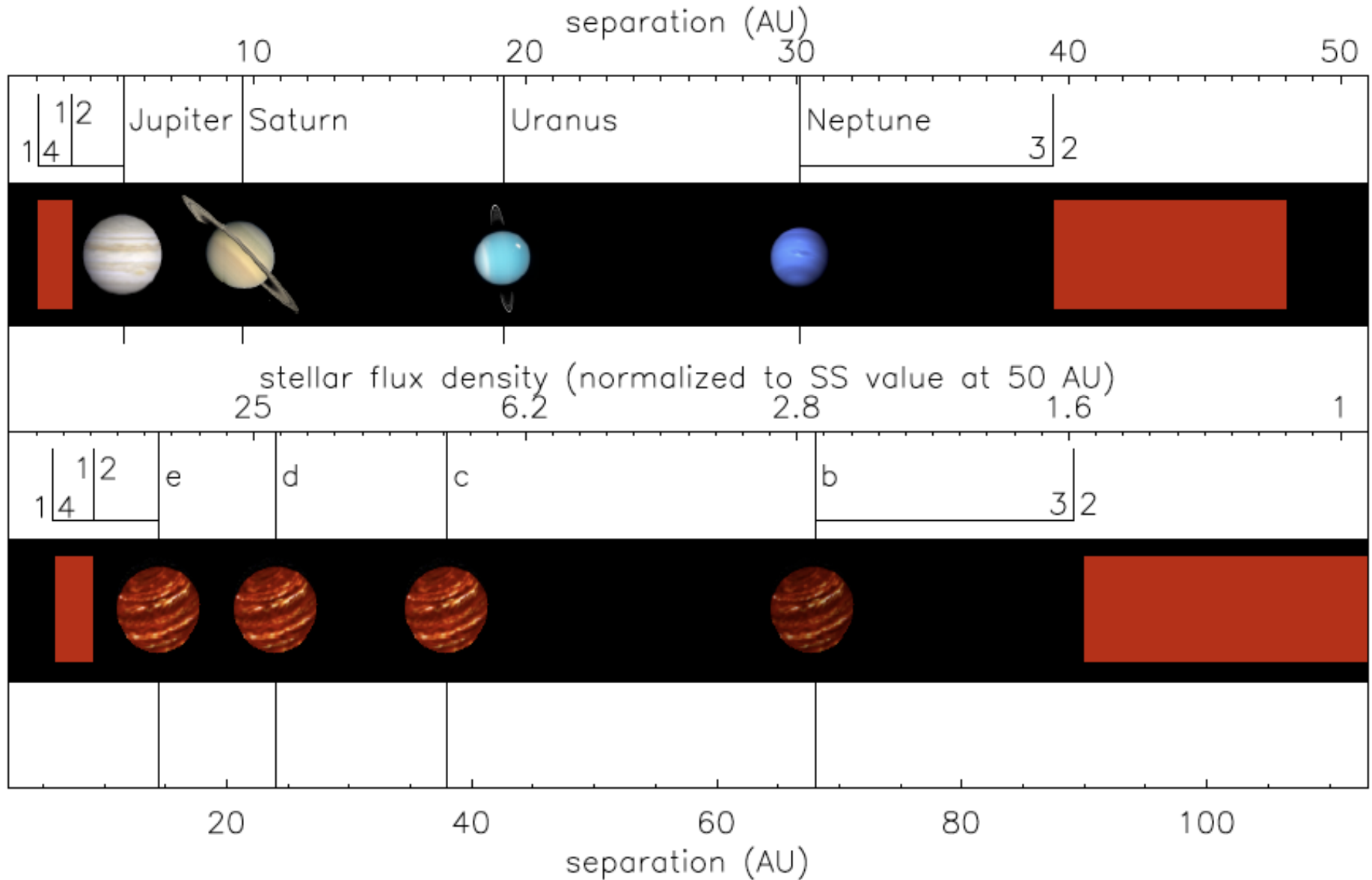


Credit:  
<https://www.nature.com/articles/nature09716.pdf>



Marois et al. 2010, Nature: <https://arxiv.org/pdf/1011.4918.pdf>

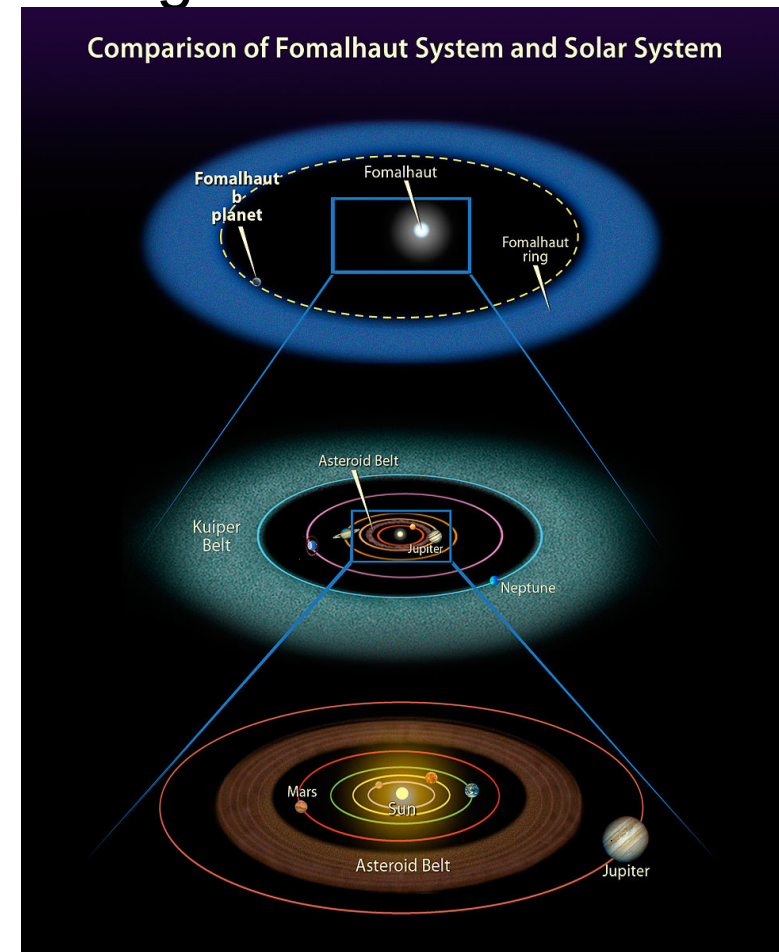
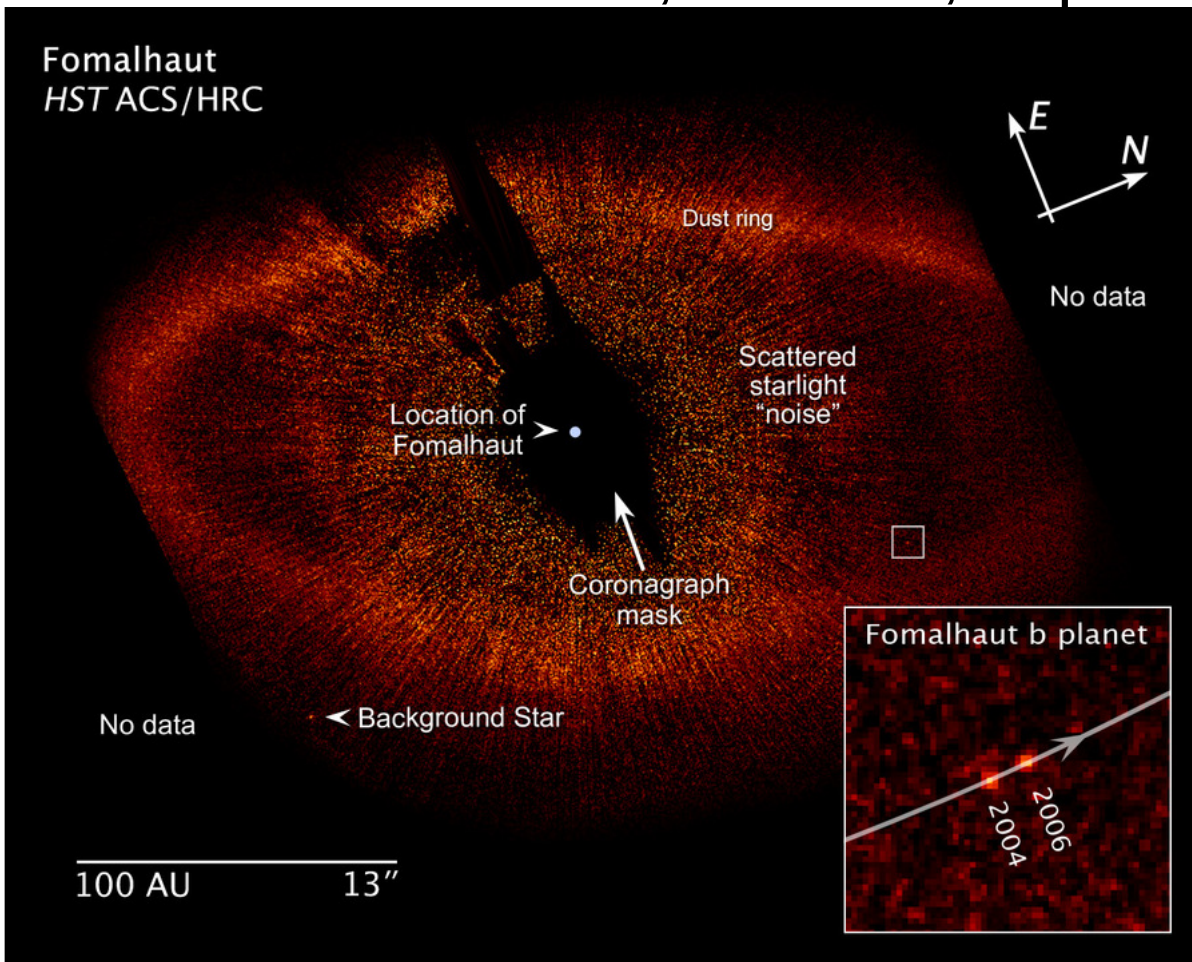
# The HR8799 system





# The Fomalhaut system

- A forming planet b? A product of collision? Is there any other planet c – if yes then must be less massive.
- Kalas et al 2008, Science, <https://arxiv.org/abs/0811.1994>



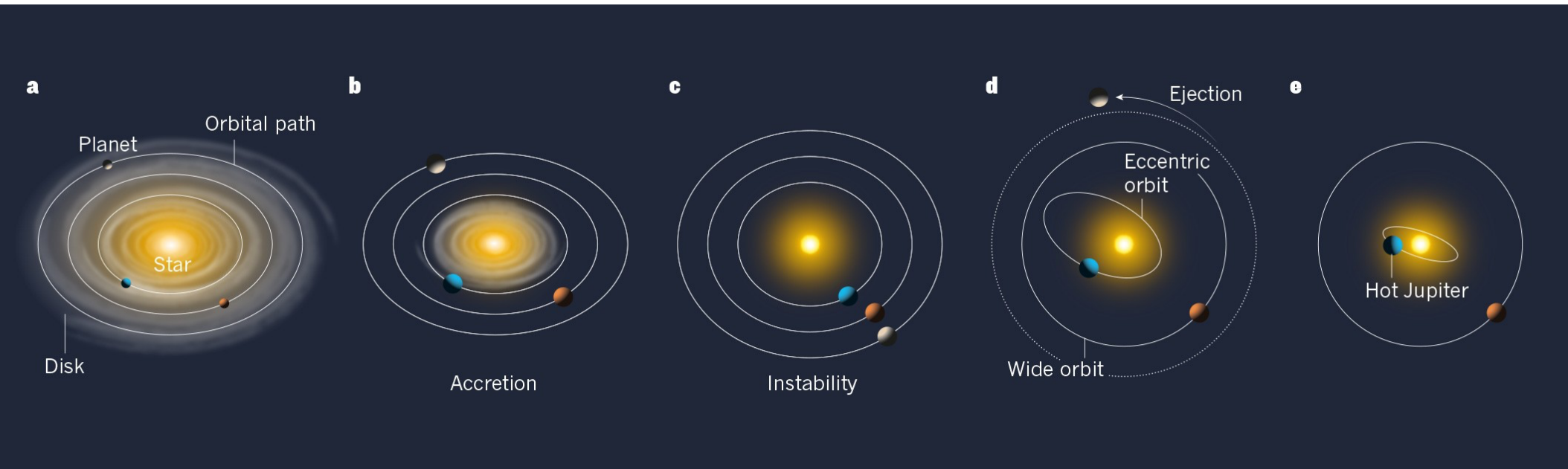
# The Fomalhaut system

- The mass of the object is about 2 masses of Jupiter
- Did the planet b form in situ by core collapse?
- Or was the planet b ejected from the system?
- Is there any other unseen planet closer to the star?
- If there is a c planet what would be its mass?
- Is it a planet or not?

# Wandering planets (Hot Jupiters case)

# Migration

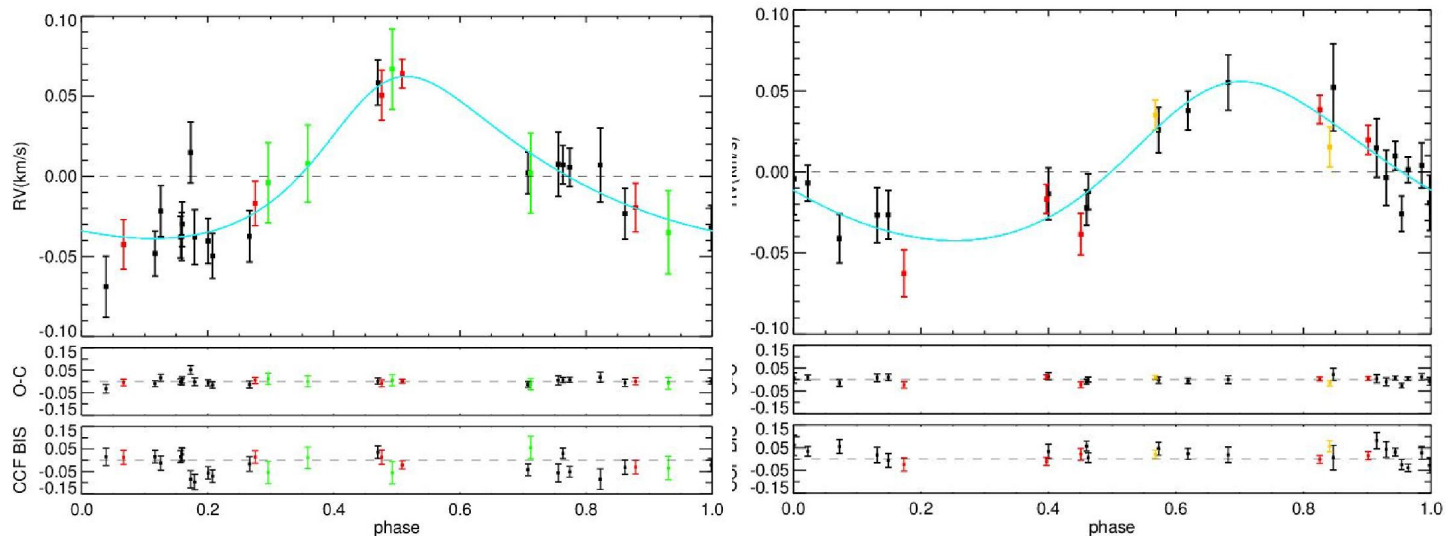
- Why are hot Jupiters so close to their stars?
- One of the theories is migration



Credit: Triaud, A. Migration of giants. *Nature* **537**, 496–497 (2016)

# Migration of HJs

- HJs in an open cluster M67 – approx. 4% occurrence rate
- Host stars are as massive as the Sun
- Why is the occurrence of HJs in cluster M67 higher than for normal FGK stars (about a 0.5-1%)?
- The interaction of stars in the cluster plays a role?



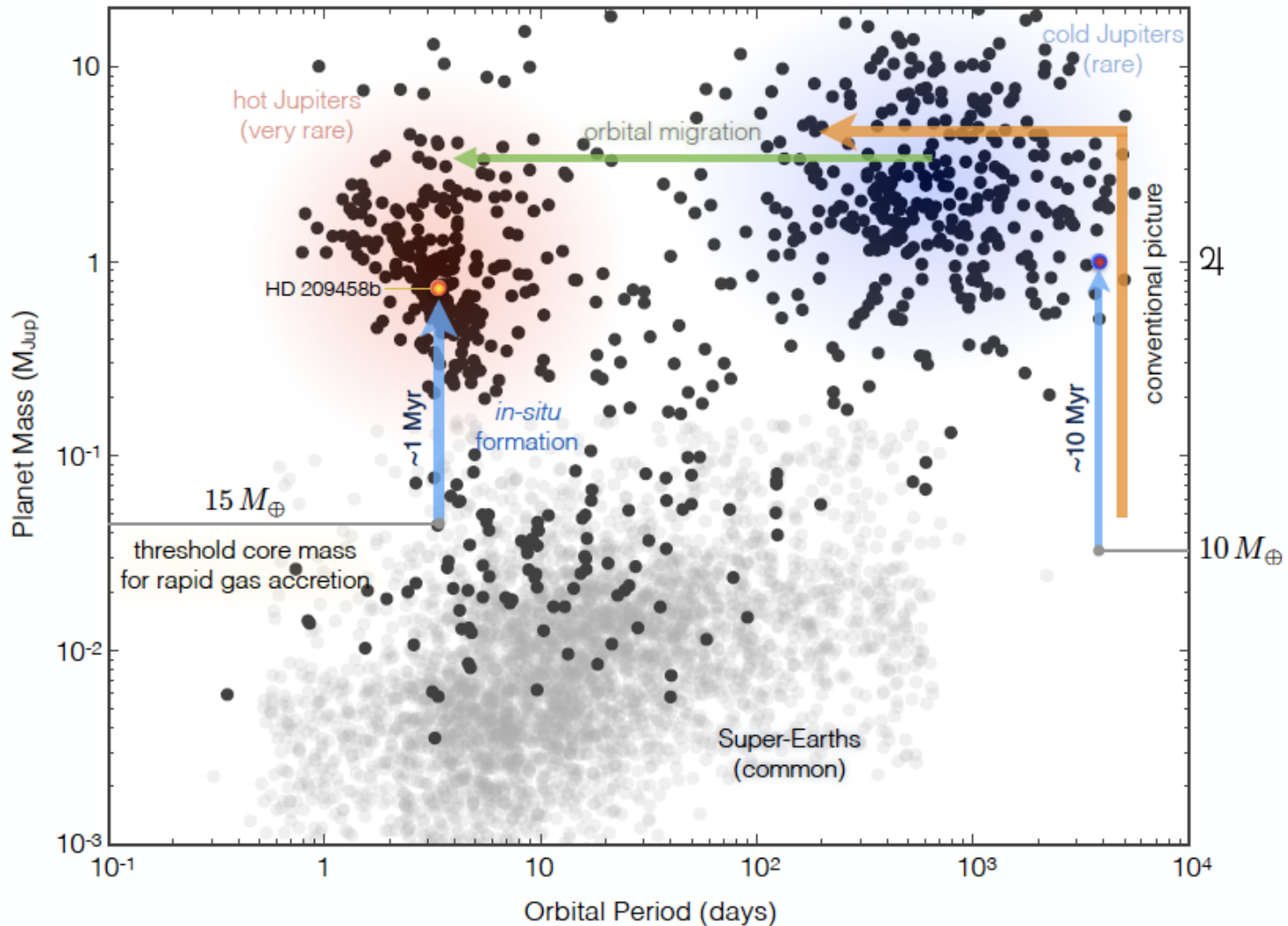
# Important questions

- How do gas planets form?
  - in situ?
  - in outer regions and they migrated?
- How do gas planets and small planets live together?
- What can tell us the orbital elements about the formation of the planetary system?

# Could the HJ form in situ?

- It was widely accepted as unlikely
  - high temperatures close to star prevent the gravitational instability scenario
  - however, core accretion might be possible under some assumptions, perhaps...
- But one would need a Super-Earth as a core for future hot Jupiter (Batygin et al. 2016: <https://arxiv.org/pdf/1511.09157.pdf>)

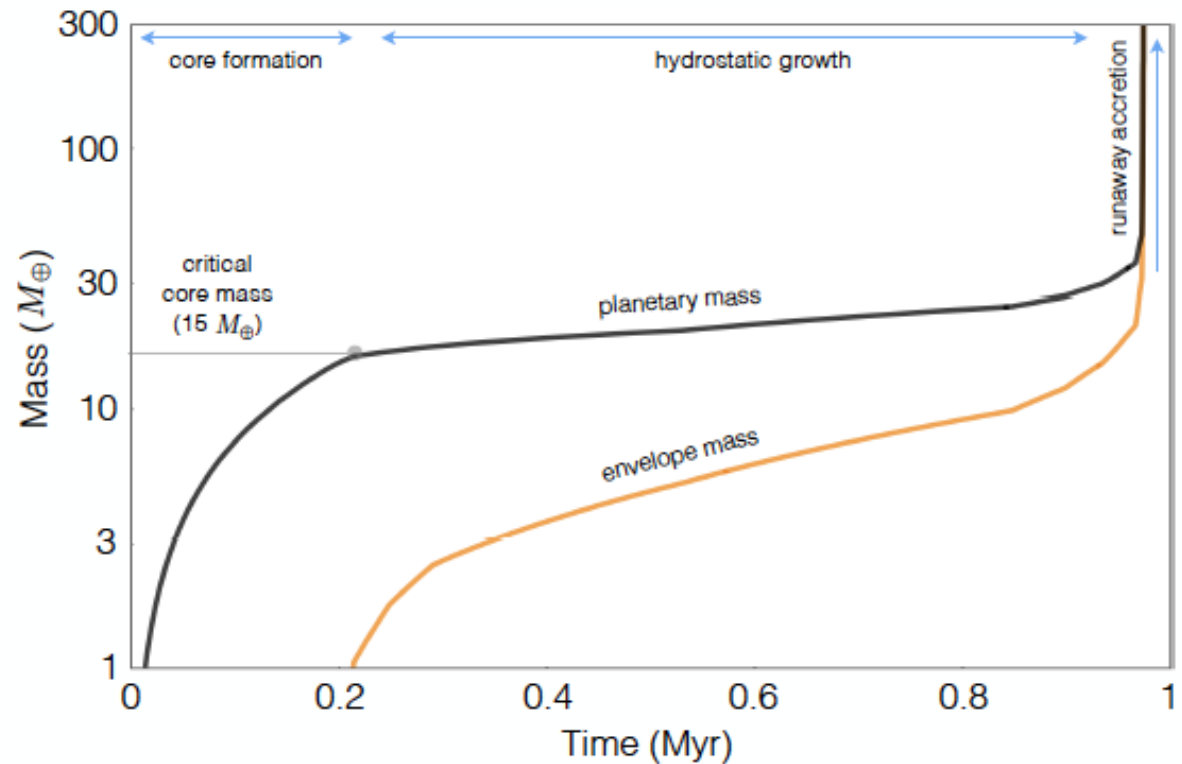
# Formation in-situ?





# In situ formation

- First the cores of 15 M Earth form
- Then the accretion creates the envelope



Batygin et al. 2016:  
<https://arxiv.org/pdf/1511.09157.pdf>

# Possible scenarios for an in-situ option

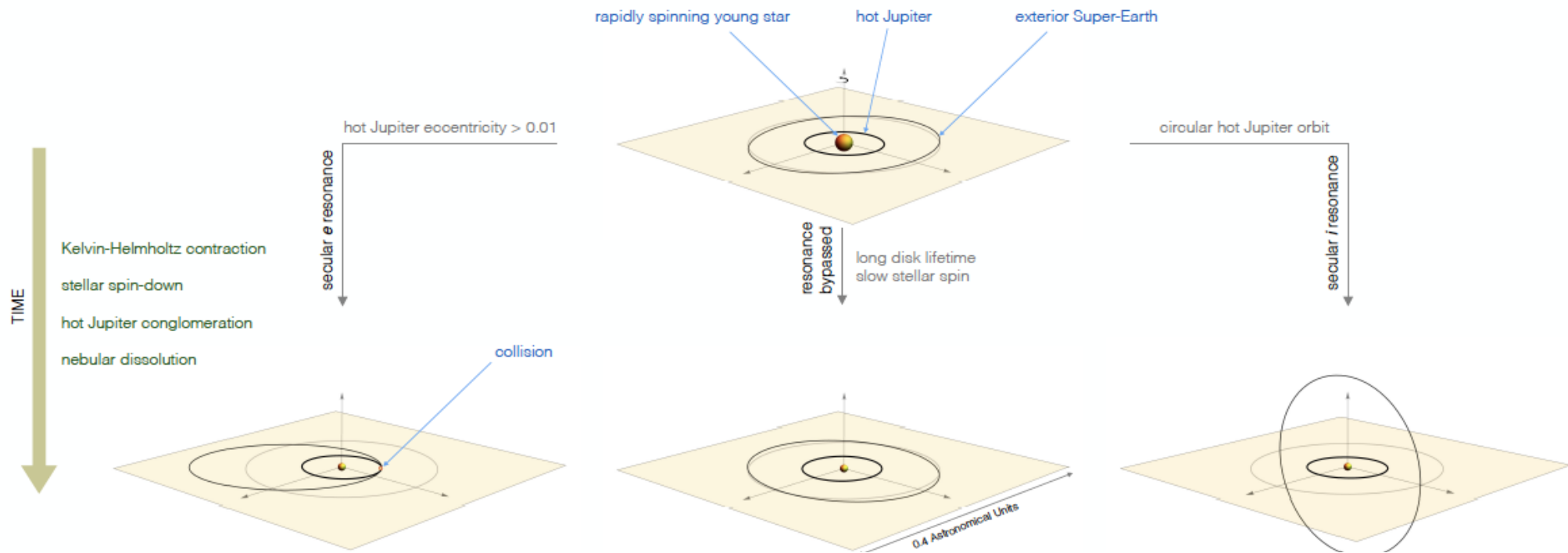


FIG. 10.— Potential outcomes of dynamical evolution of hot Jupiter-hosting planetary systems. An initially nearly-planar, quasi-circular, low-mass multi-planetary system is taken to evolve under the influence of mutual gravitational coupling, interactions with the protoplanetary nebula, as well as the quadrupole field of the young, rapidly rotating star. As the nebula dissipates, the inner orbit experiences *in situ* conglomeration. Meanwhile, the star undergoes gravitational contraction and loses angular momentum, thereby shedding its quadrupole moment. Cumulatively, these physical processes can give rise to scanning secular resonances that sweep through the inner region of the planetary system. As a result, exterior companions to hot Jupiters can be driven onto intersecting trajectories, or acquire nearly orthogonal orbits, depending on whether hot Jupiters maintain eccentricities above or below  $e_{\text{HJ}} \sim 0.01$  during the early stages of their lifetimes. On the other hand, coplanarity and dynamical stability can be maintained if disk lifetime is sufficiently long, or stellar rotation is sufficiently slow, to preclude the establishment of secular resonances.

Batygin et al. 2016:

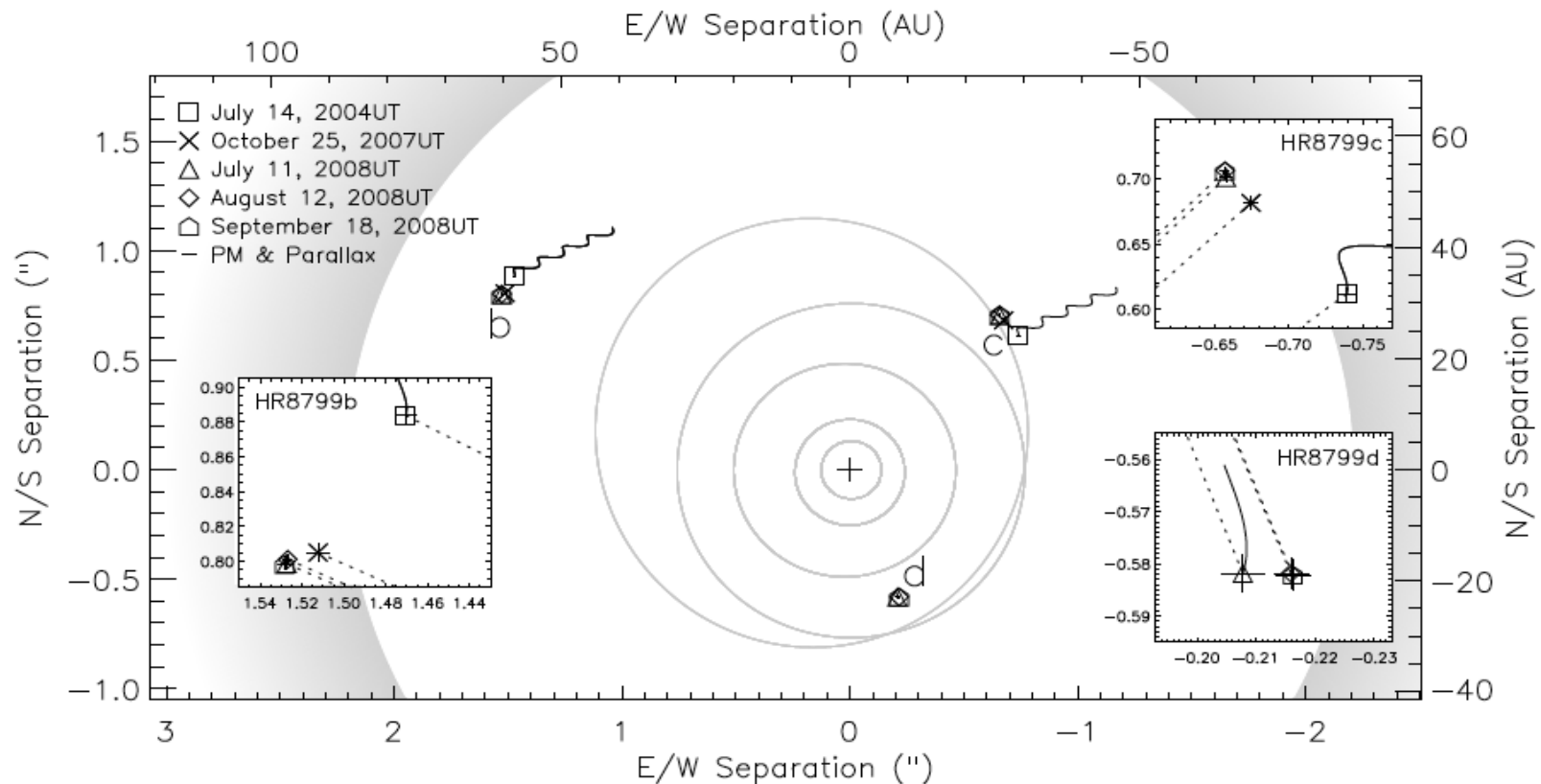
<https://arxiv.org/pdf/1511.00157.pdf>

# Solar system example

- Recall Batygin et al. 2016 describing a perturber in our Solar System on wide orbit (Planet Nine) – 150-250 AU
- The planet Nine combines all above effects
  - it would have to be ejected (not in-situ)
  - it explains highly eccentric orbits of dwarf planets (Sedna etc.....)
- But is it there? Or could it be out there?

# Recalling HR 8799

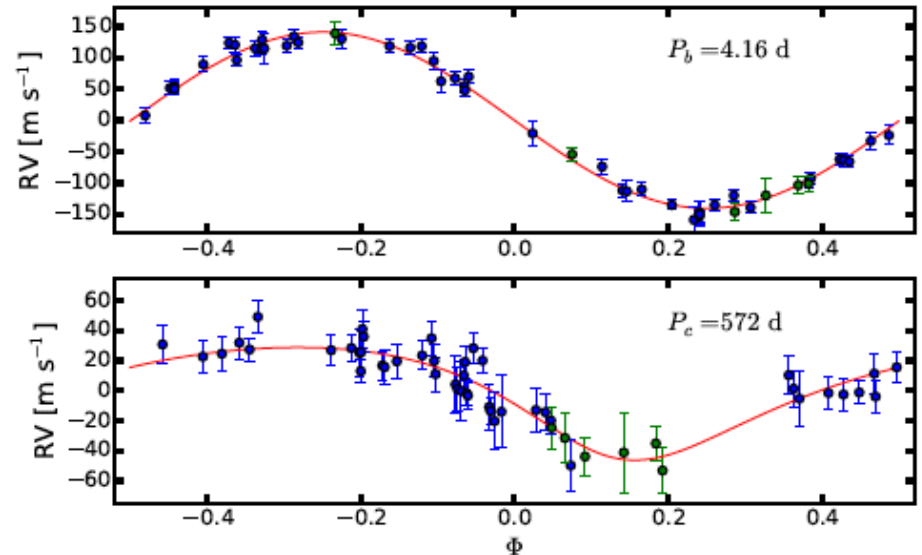
- We know already HR 8799 system as an example of large orbit. So why not Planet Nine?



# Back to Hot Jupiters (large and small living together)

# Wasp-47 system

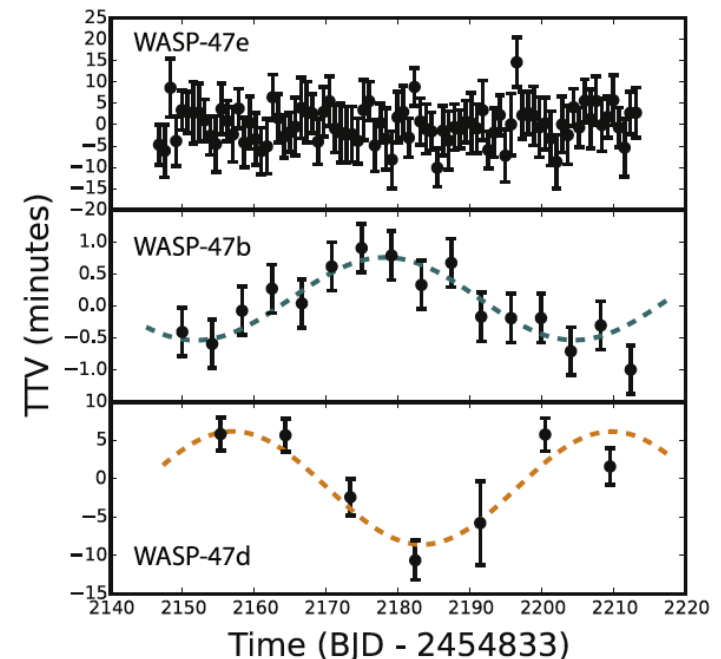
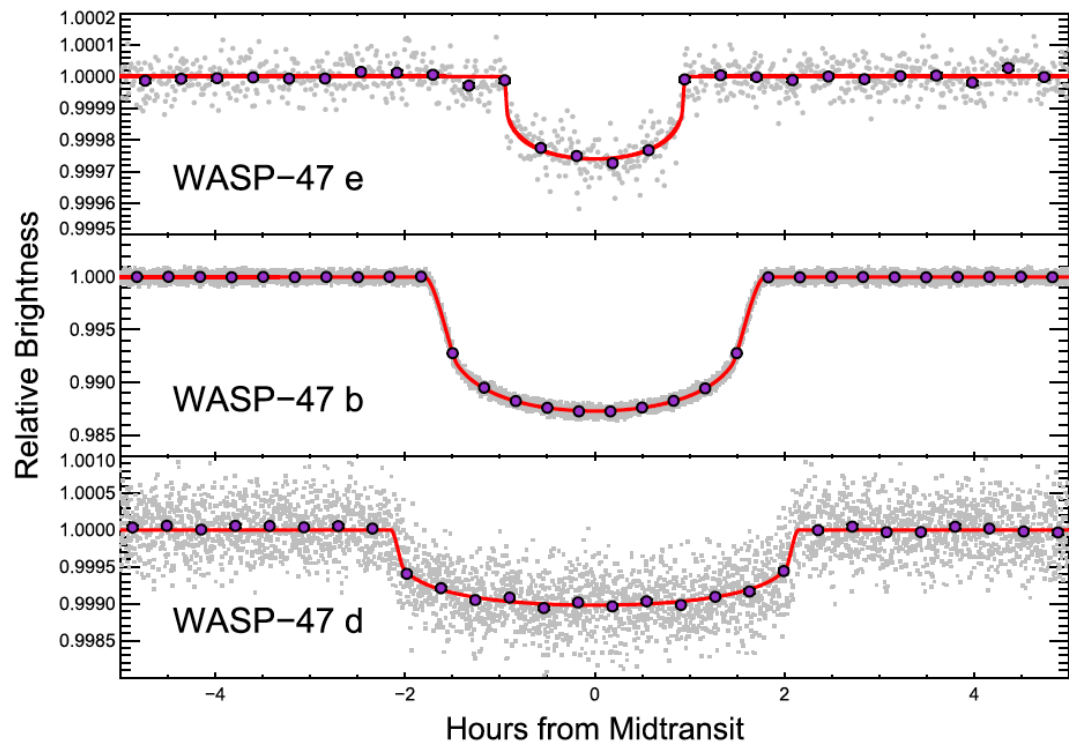
- First system with HJ, Super-Earths and a long periodic planet of Jupiter size.
- The Period of c planet is 572 days
- But is this system unique or is it rather a common representative of the formation process in-situ? We do not know, yet for sure.



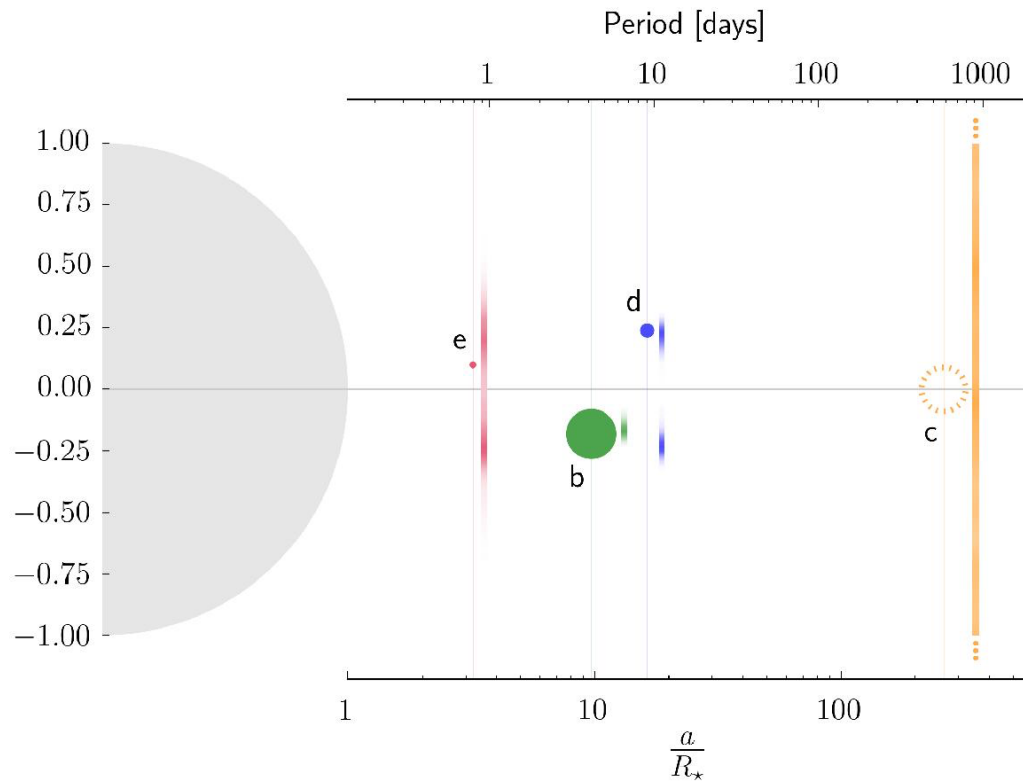
Neveu-VanMalle 2018 <https://arxiv.org/pdf/1509.07750.pdf>

# Wasp-47 system

- Is it rather an exception or a rule?
- Example of an in-situ formation?
- How did the system form?

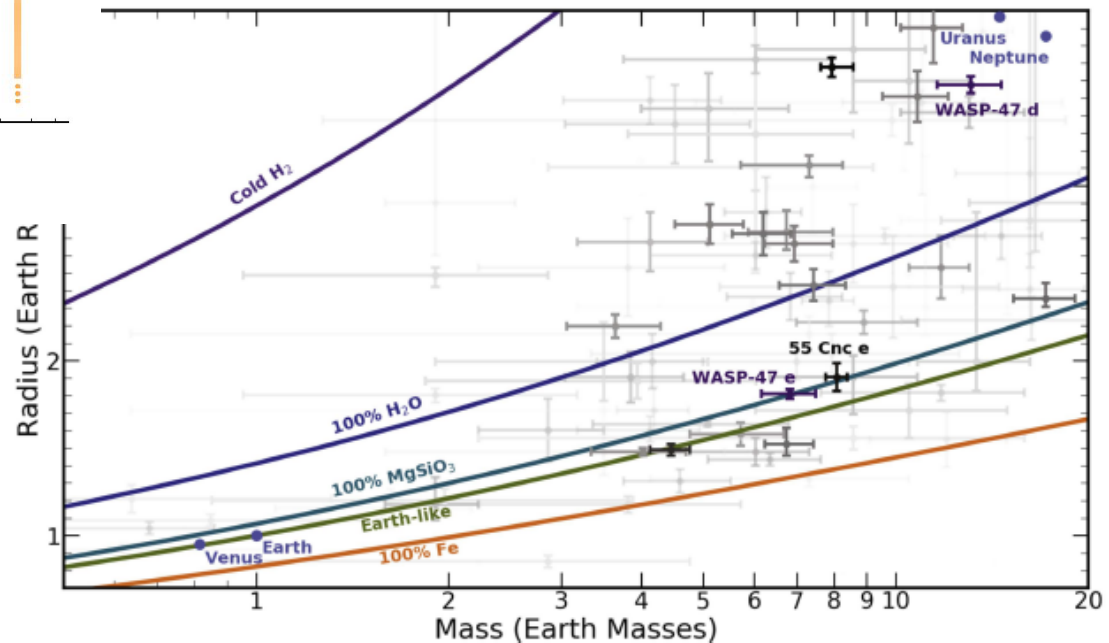


# Wasp-47 system



Vanderburg 2017,  
<https://iopscience.iop.org/article/10.3847/1538-3881/aa918b/pdf>

Alemenara et al. 2016:  
<https://www.aanda.org/articles/aa/abs/2016/11/aa29770-16/aa29770-16.html>

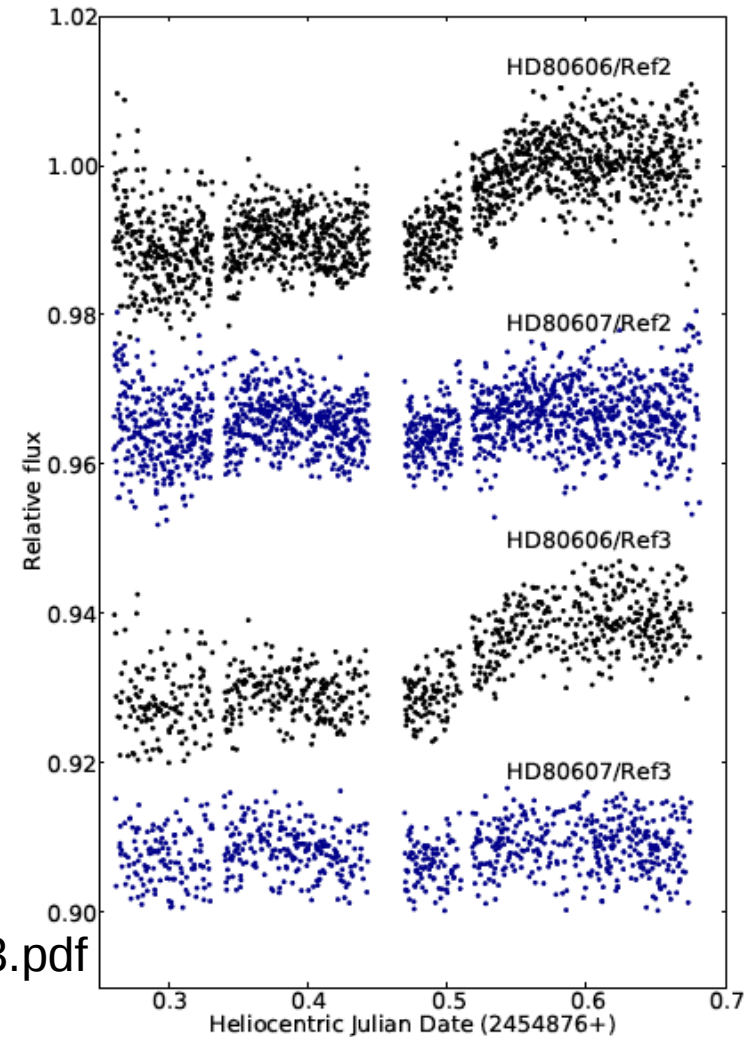




# Warm Jupiters

# Warm Jupiters

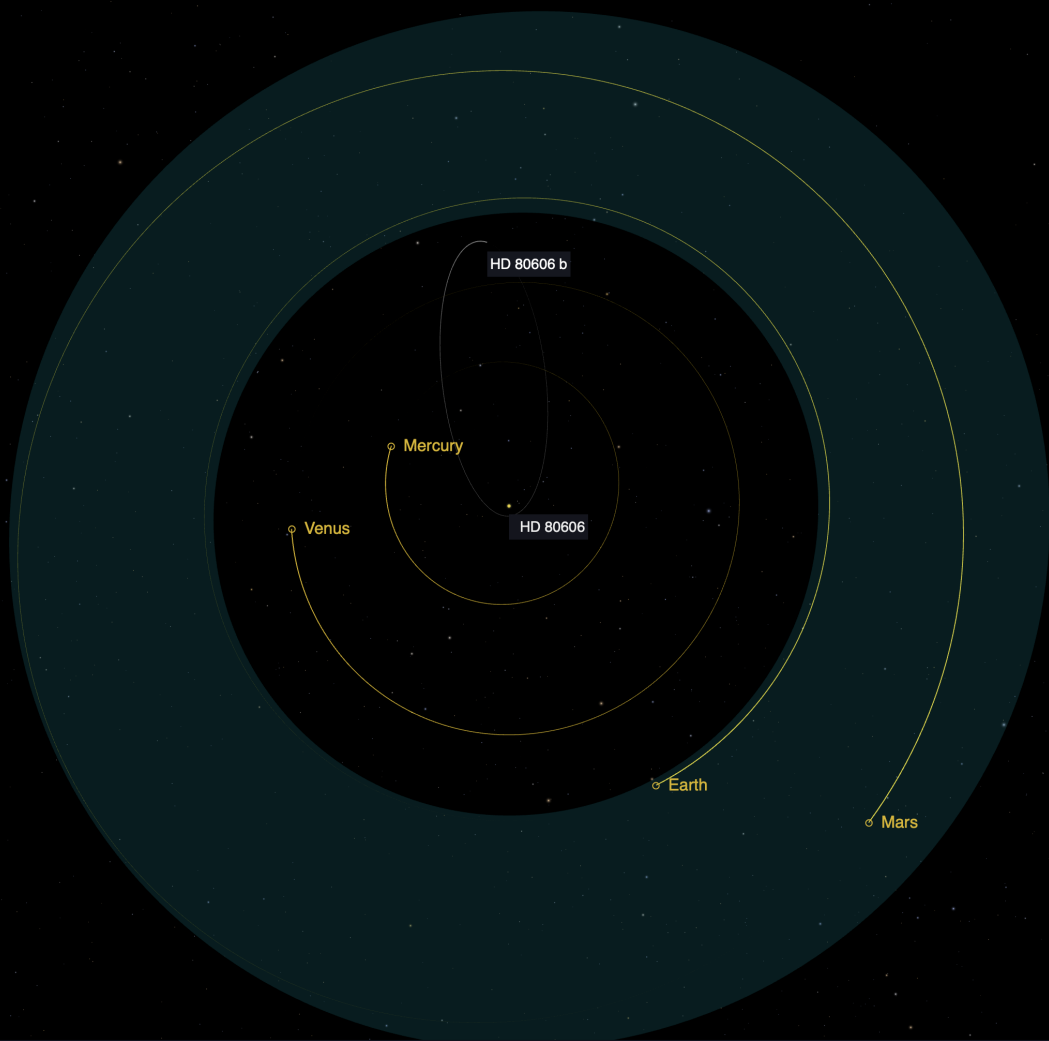
- Gas giants with orbital periods 10-200 days
- HD 80606 b – 111 days period
  - binary component HD 80607
  - 4 Jupiter masses
  - 12 hrs. Transit
  - 0.93 eccentricity (very high)
- Orbital parameters  
might be the key to formation?
- Discovery:  
Naef et al. 2001  
<https://www.aanda.org/articles/aa/pdf/2001/32/aade293.pdf>



# Orbit of HD80606b




Habitable Zone

You are  
217 light-years  
from Earth



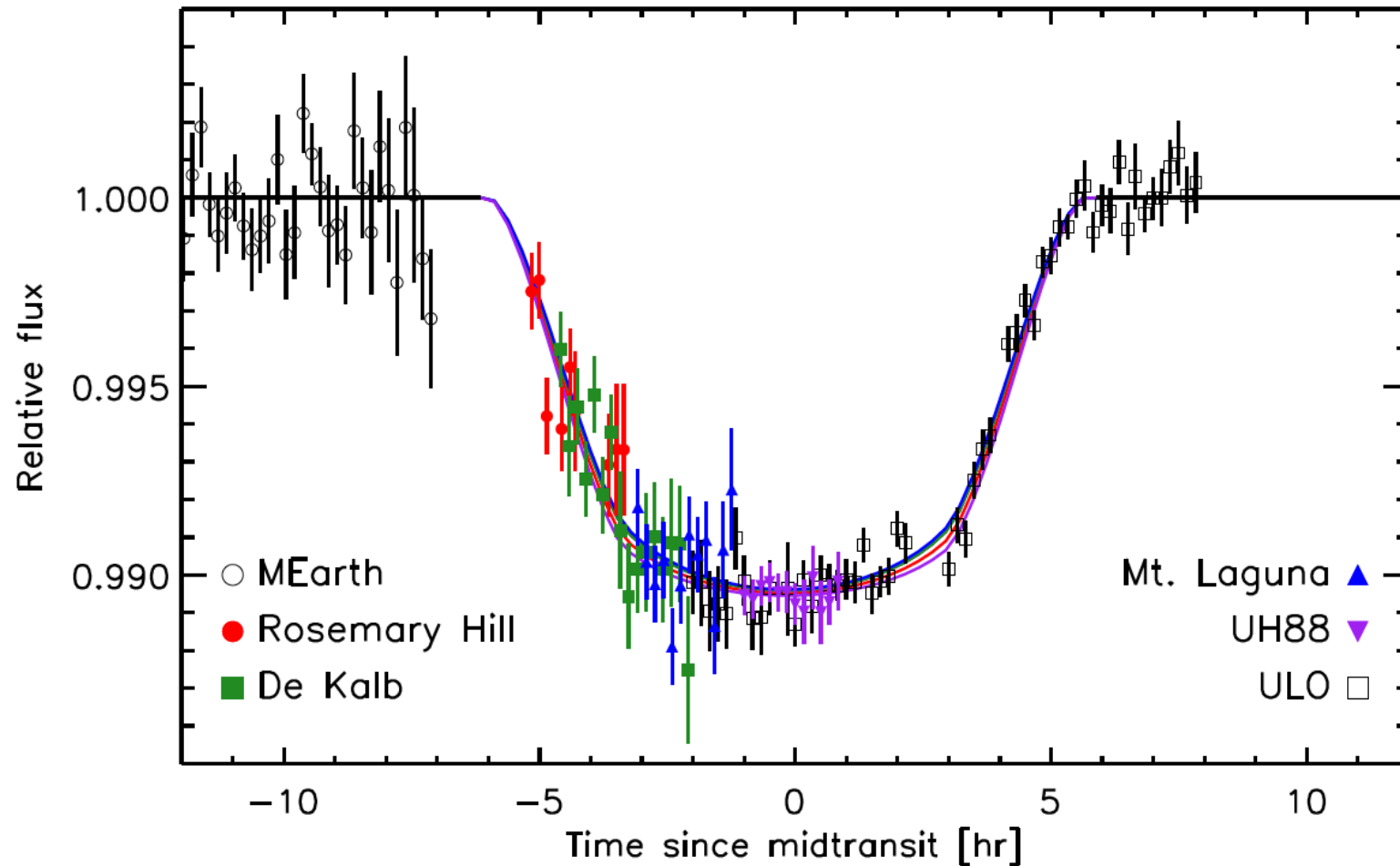
HD 80606  
1 planet orbiting a G-type star, 217 light-years from Earth.

VIEW

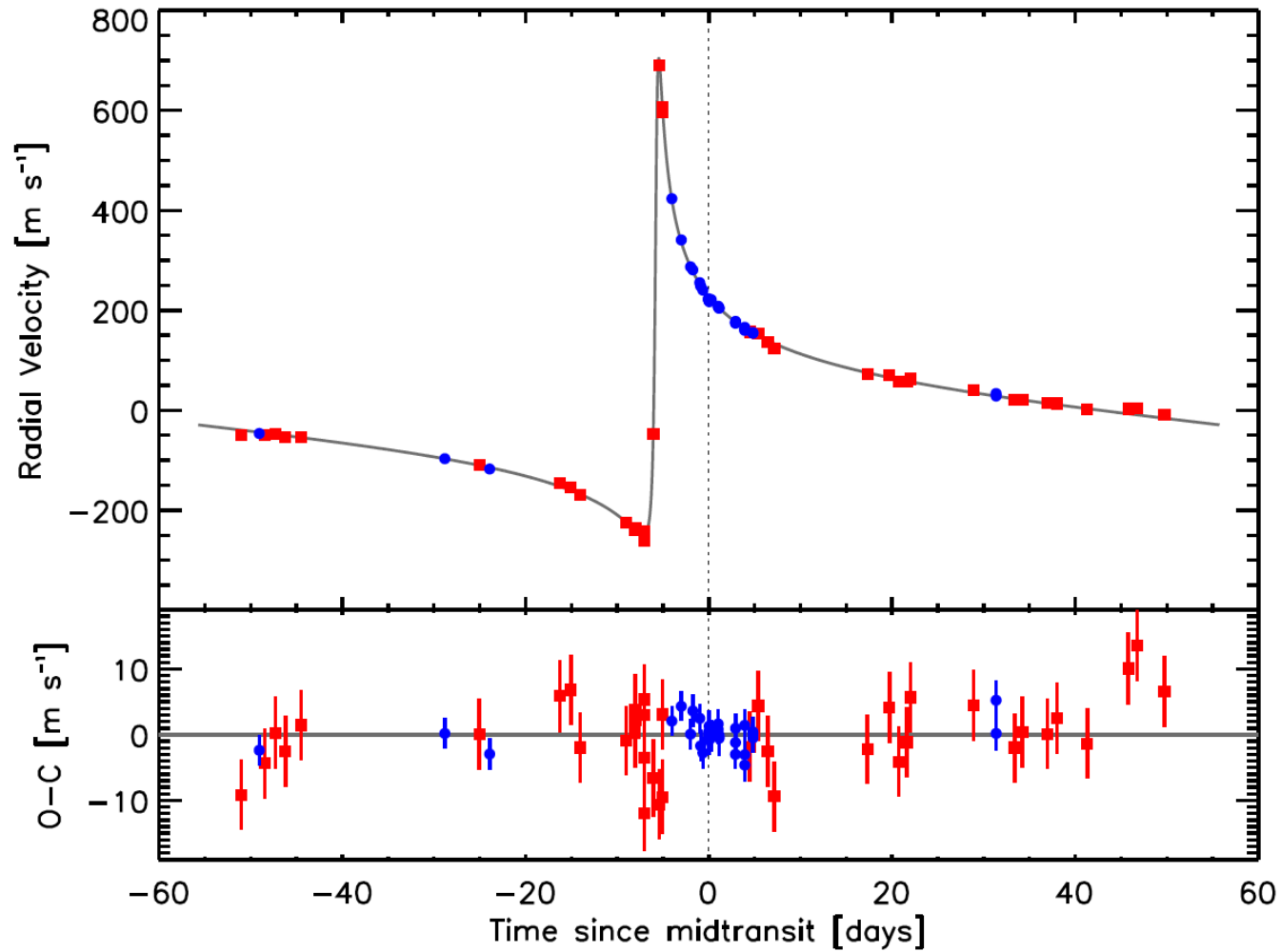
 Planet  System  Star

COMPARE TO OUR SOLAR SYSTEM

# A challenging transit

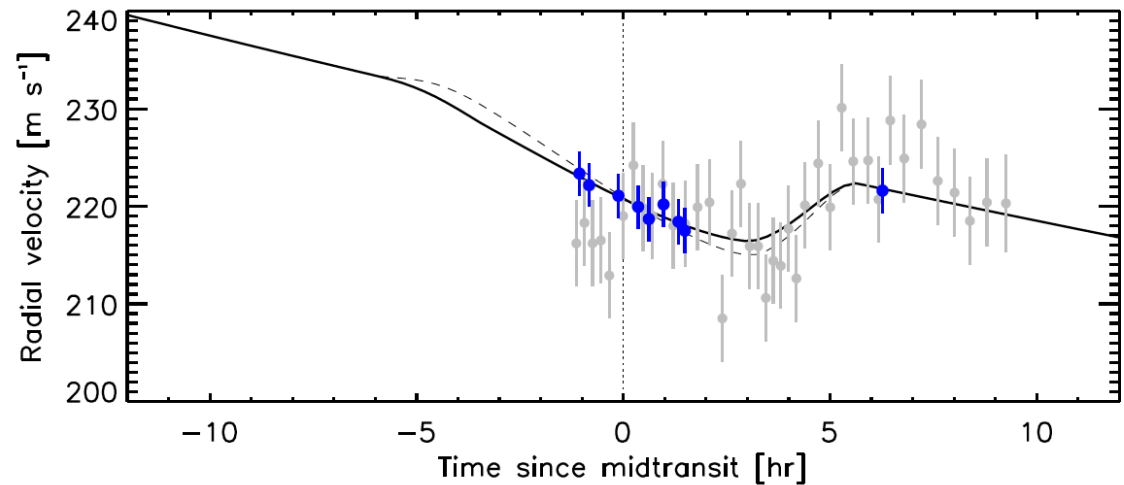
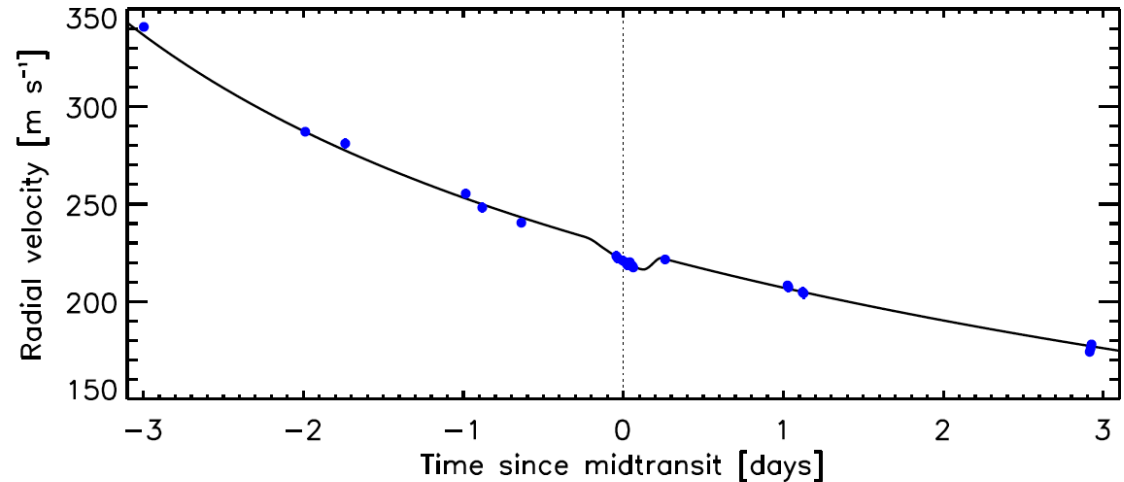


# HD 80606 b



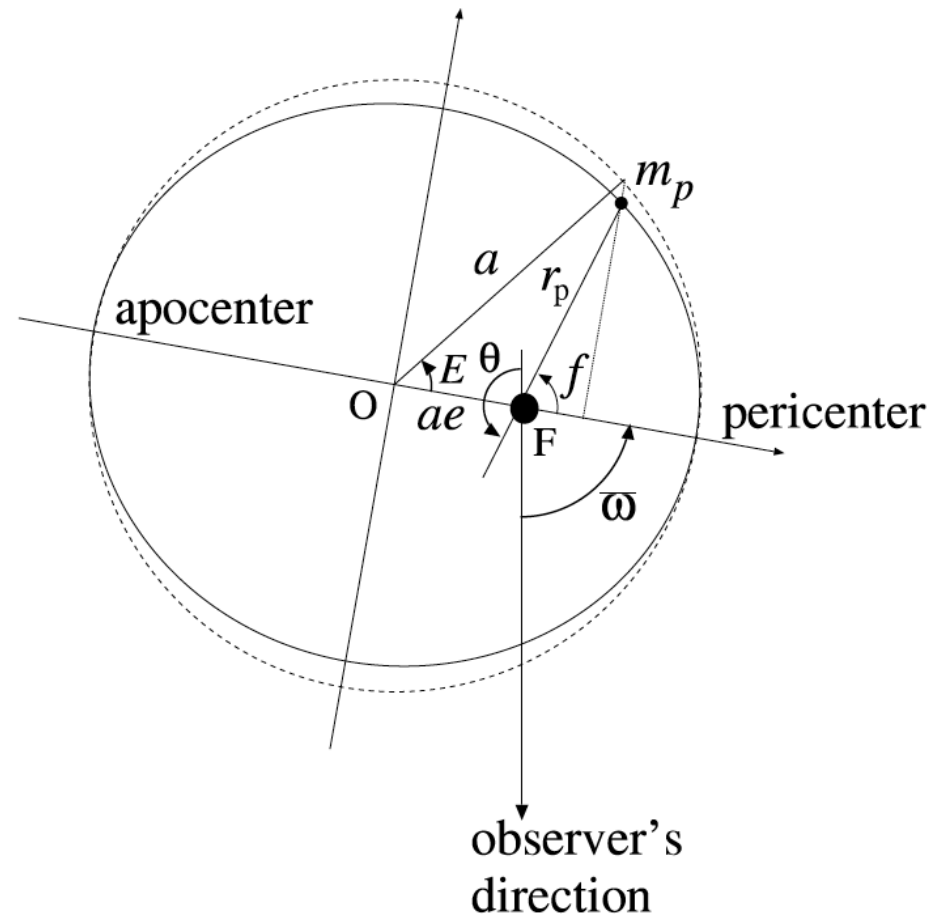
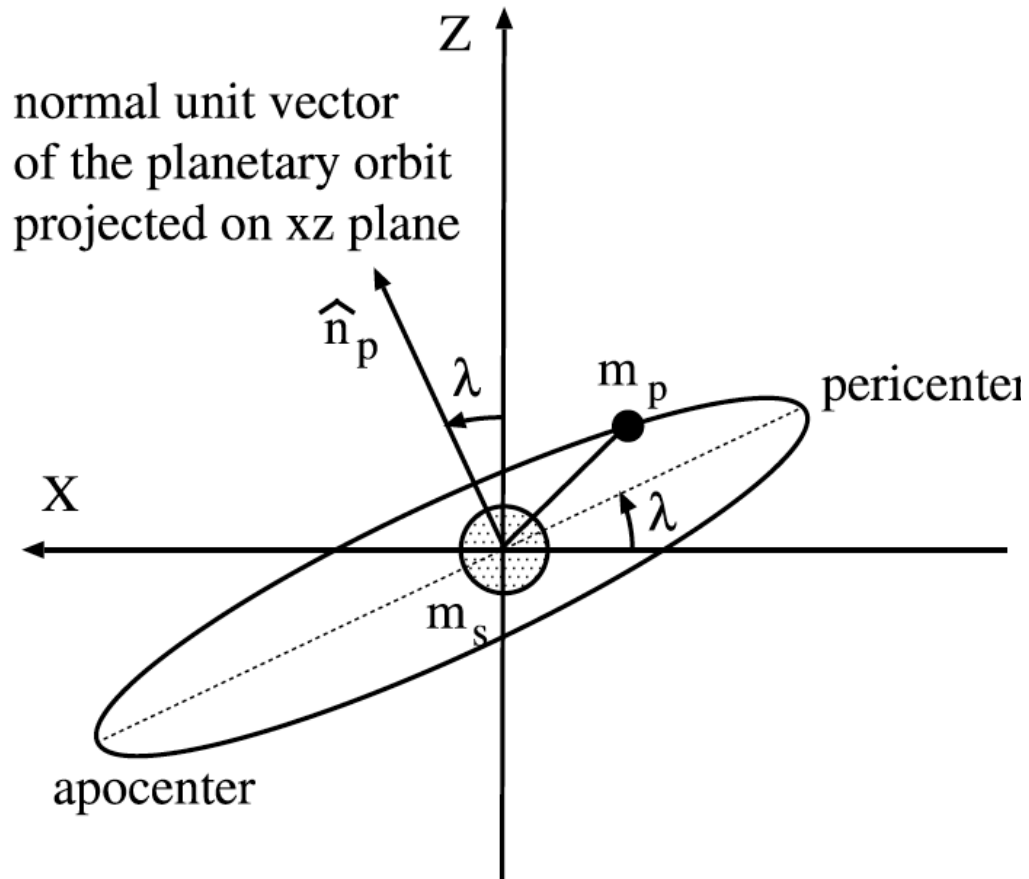
# Spin orbit alignment

- HD 80606b
- RM effect shows misalignment of the rotational axes
- Misalignment might point towards migration scenario
- Therefore, the better the characteristics of the orbital parameters

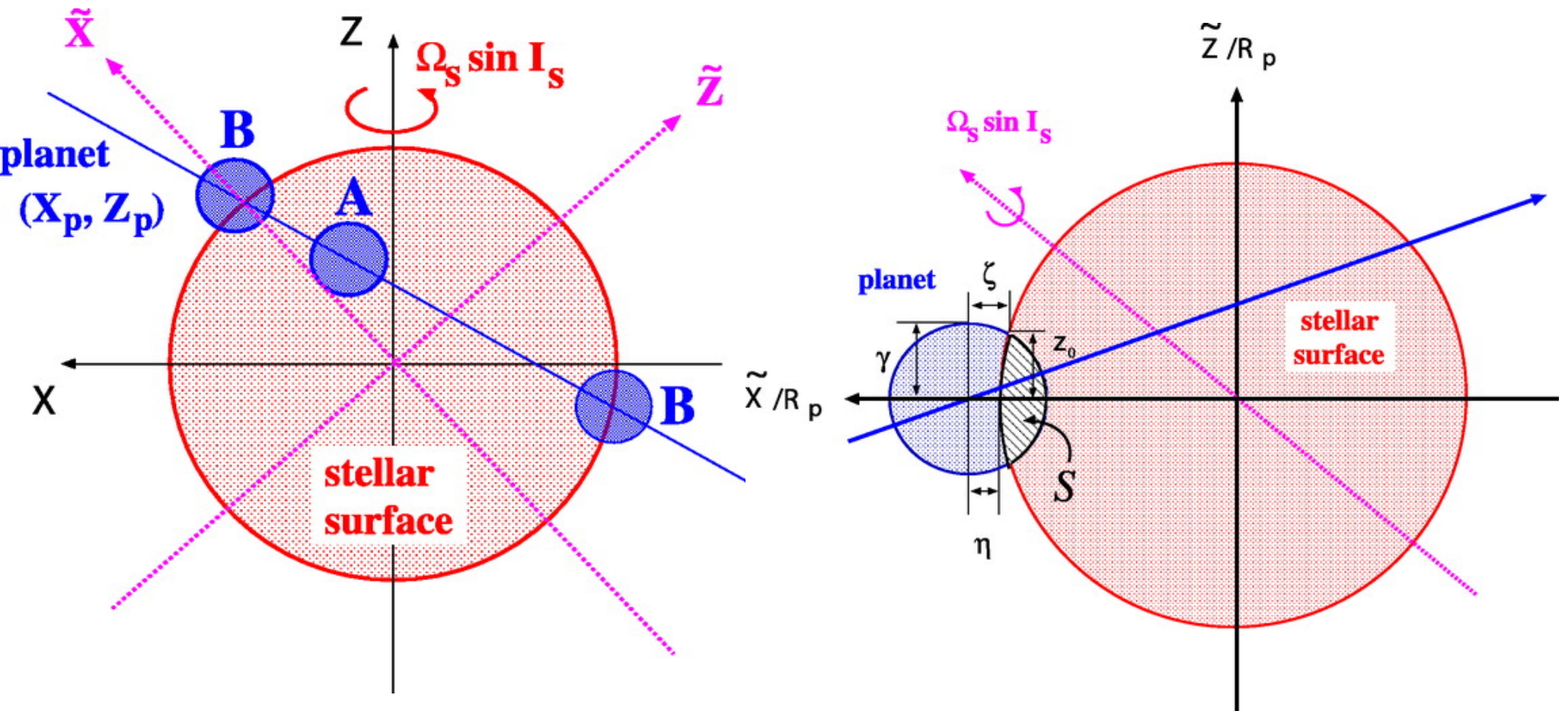


the better is the understanding

# R-M effect - info

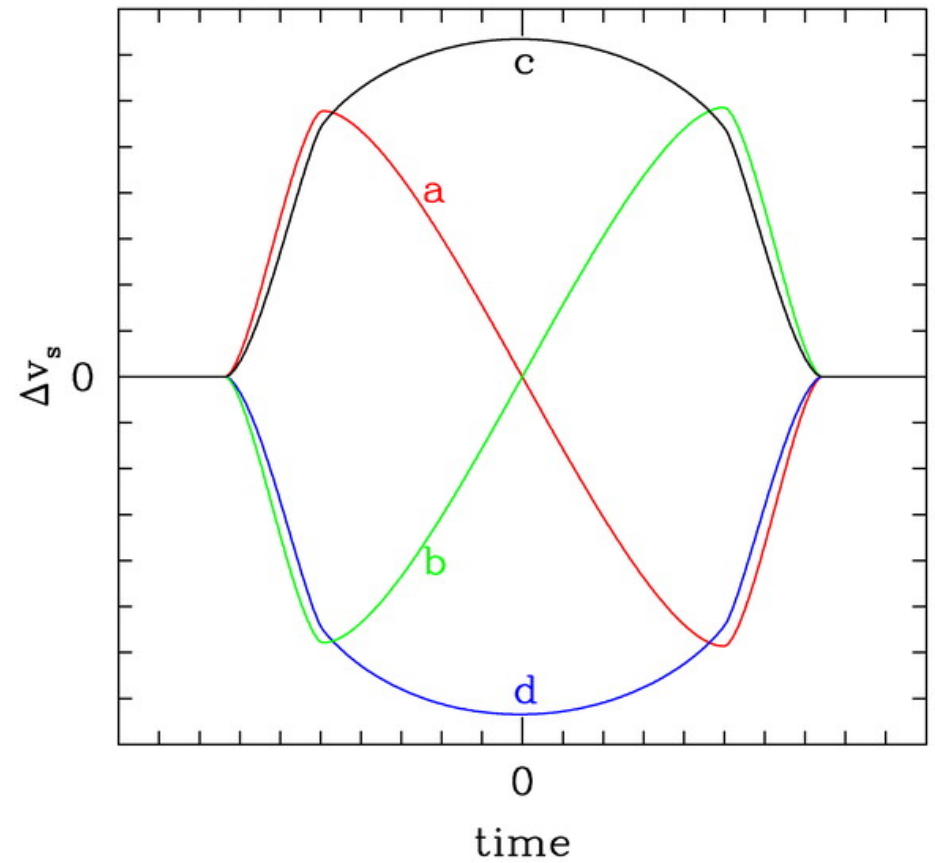
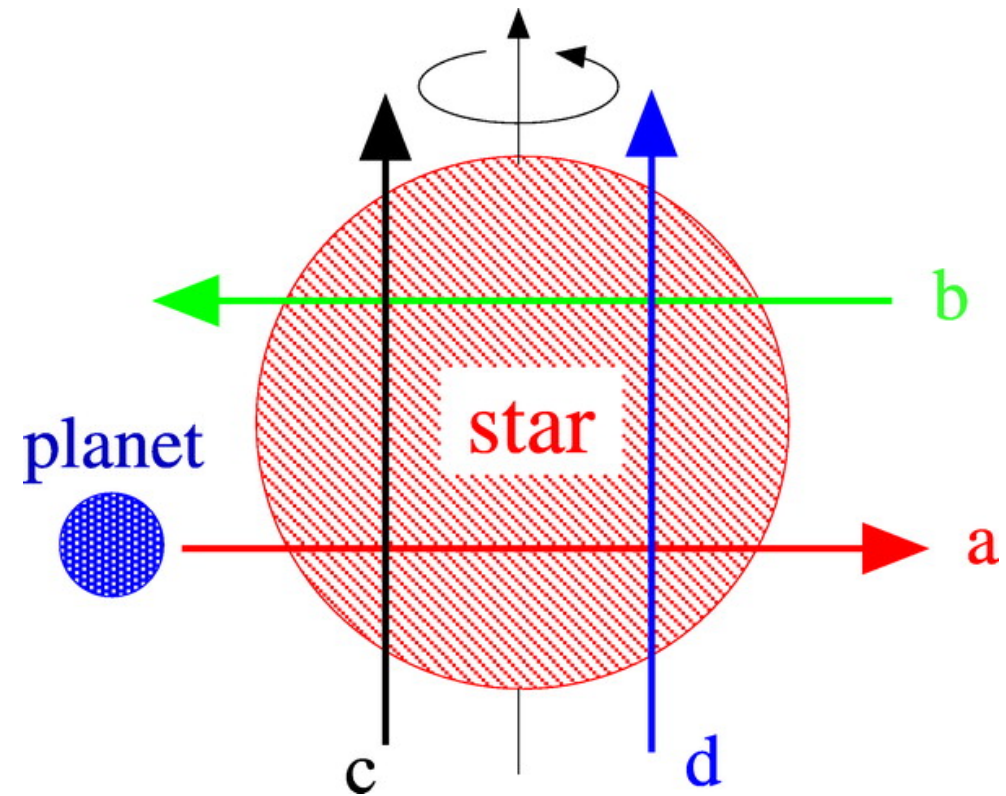


# R-M effect

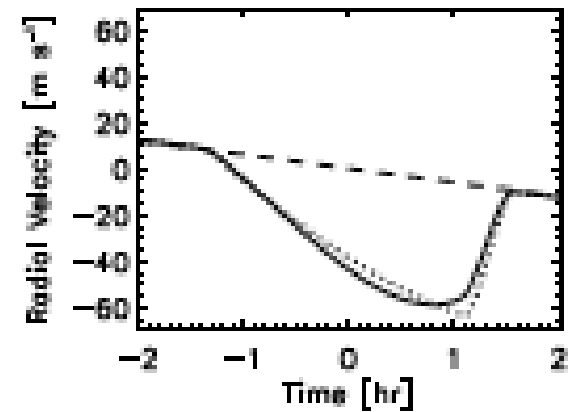
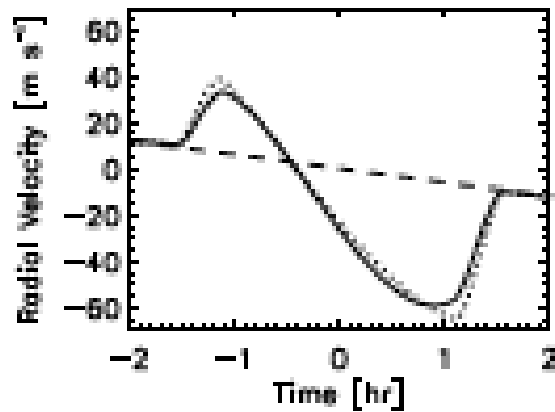
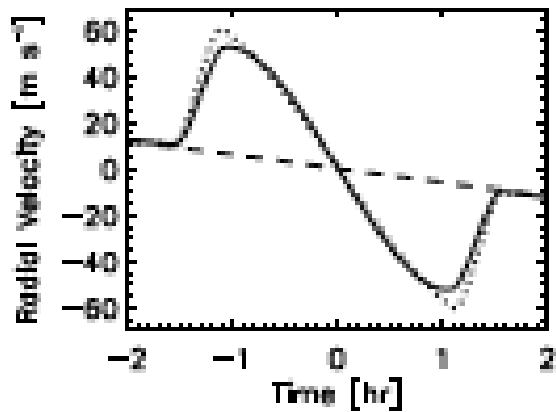
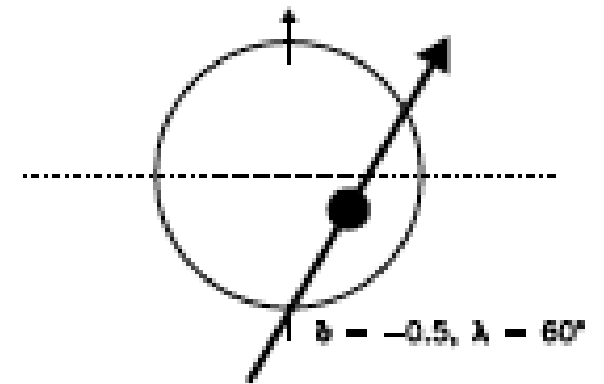
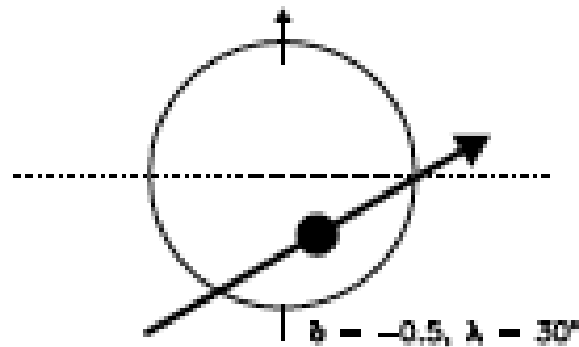
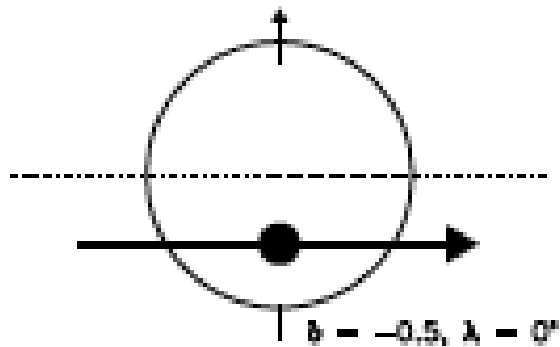




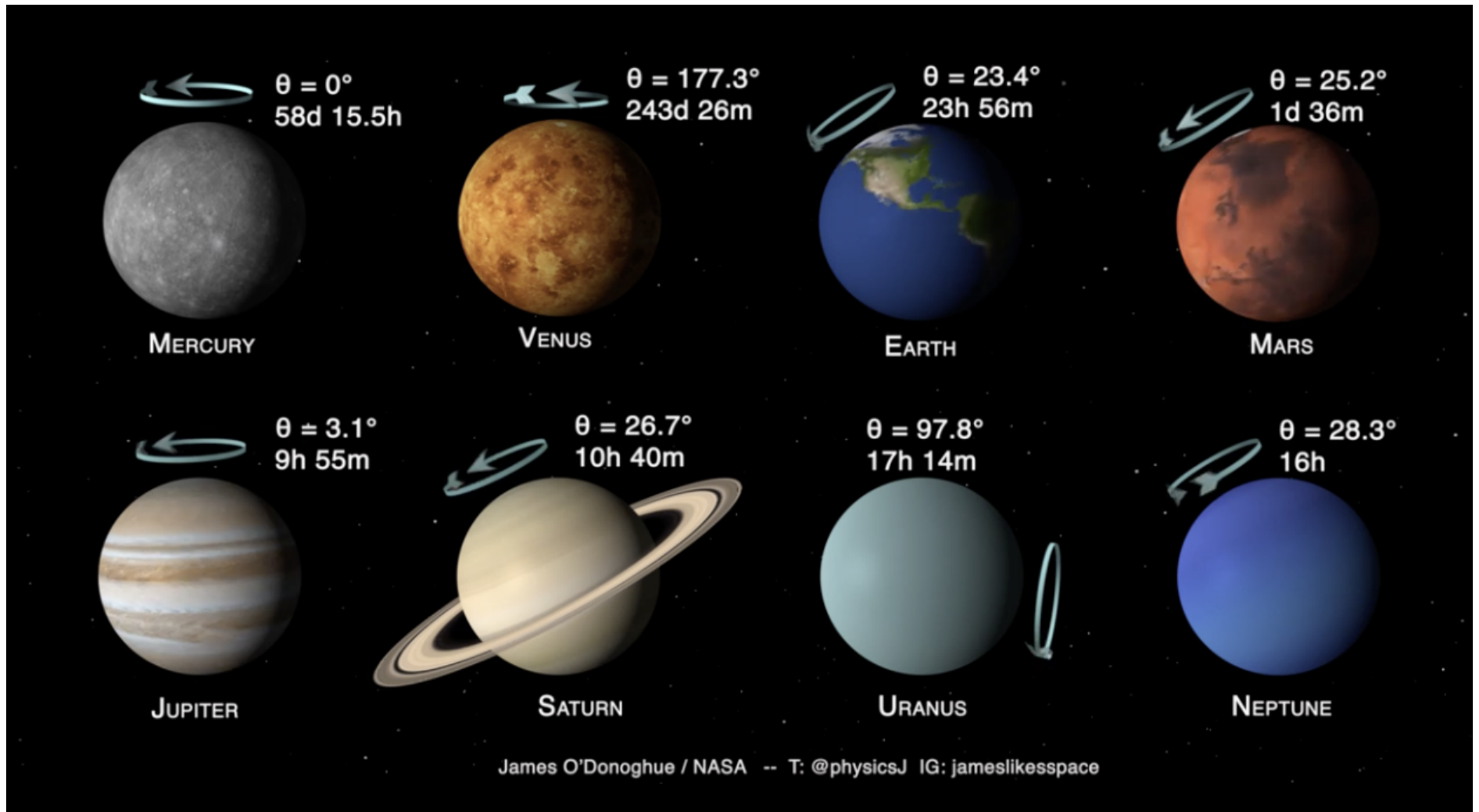
# R-M effect



# Examples of R-M



# Solar system compared (tilts)



# HD 80606b

- Which process is responsible for the high eccentricity?
- Did the planet form close to the star in a circular orbit?
- Is the Kozai-Lidov mechanism responsible for the HD 80606b orbital parameters – high eccentricity (perturber star HD 80607)?

# Recap

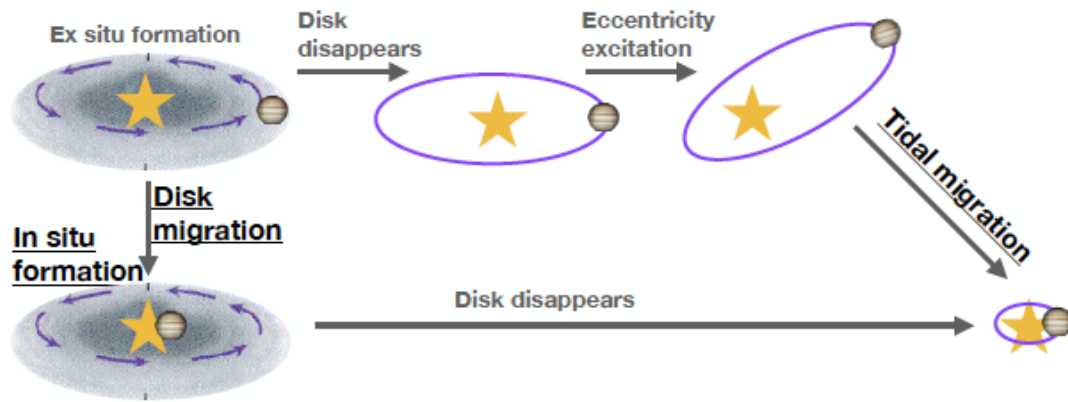
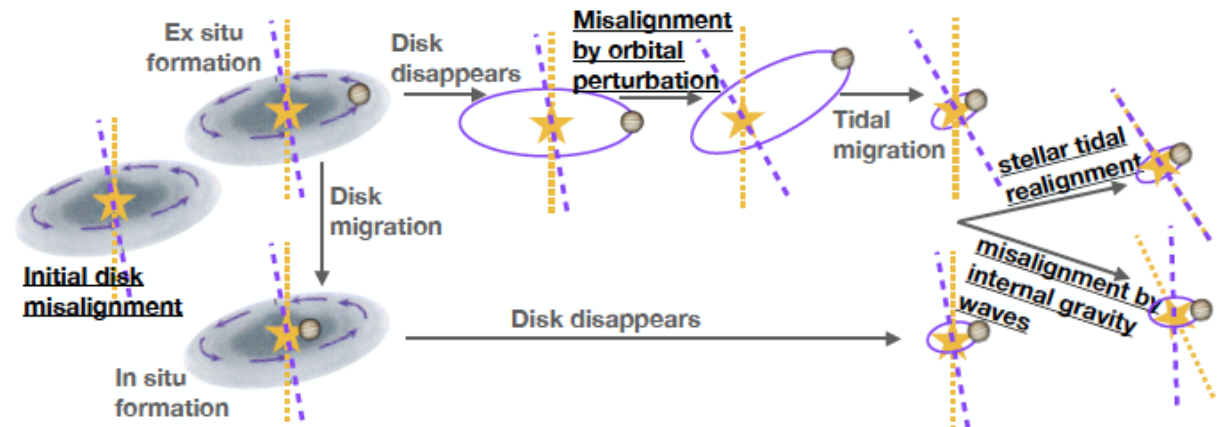


Figure 1 Three origins hypotheses for hot Jupiters: in situ formation (§2.1), disk migration (§2.2), and tidal migration (§2.3).

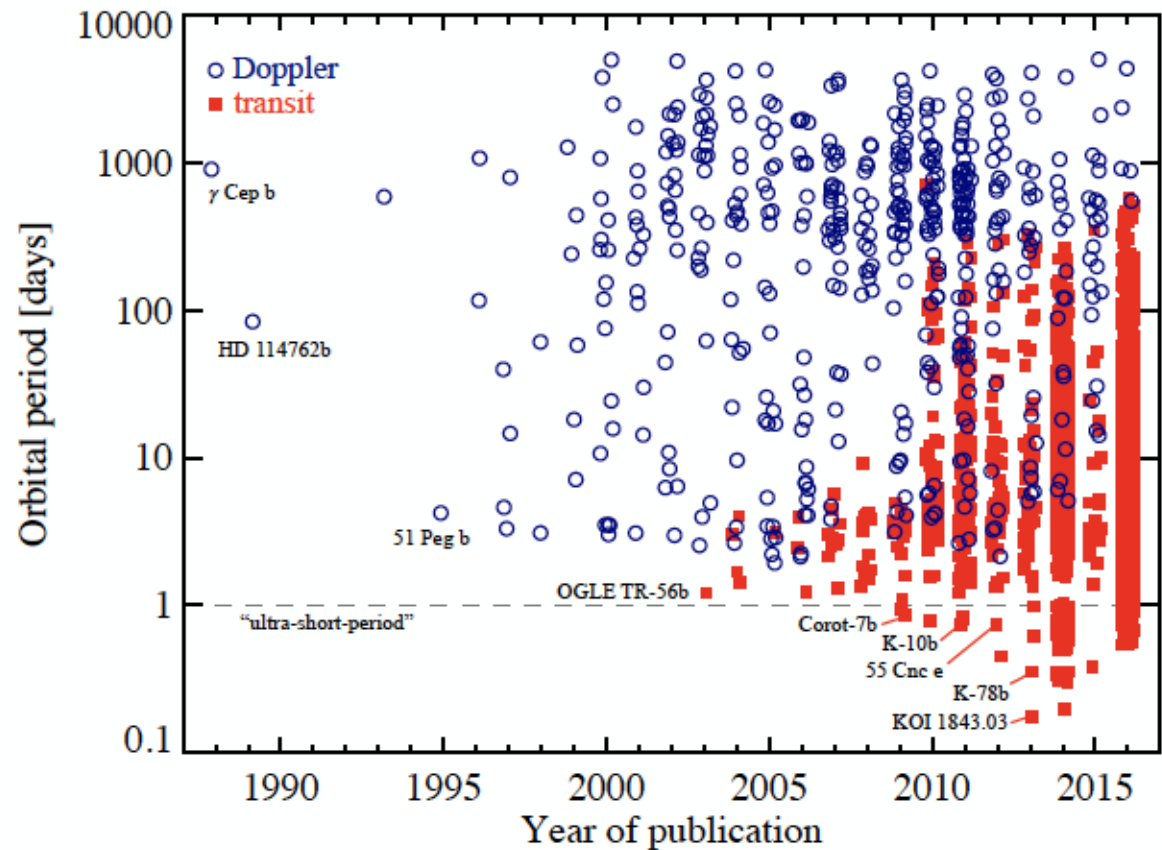


Another interesting group of planets  
(moving towards smaller planets)

# Ultra Short Period Planets

# Ultrashort period planets (USPs)

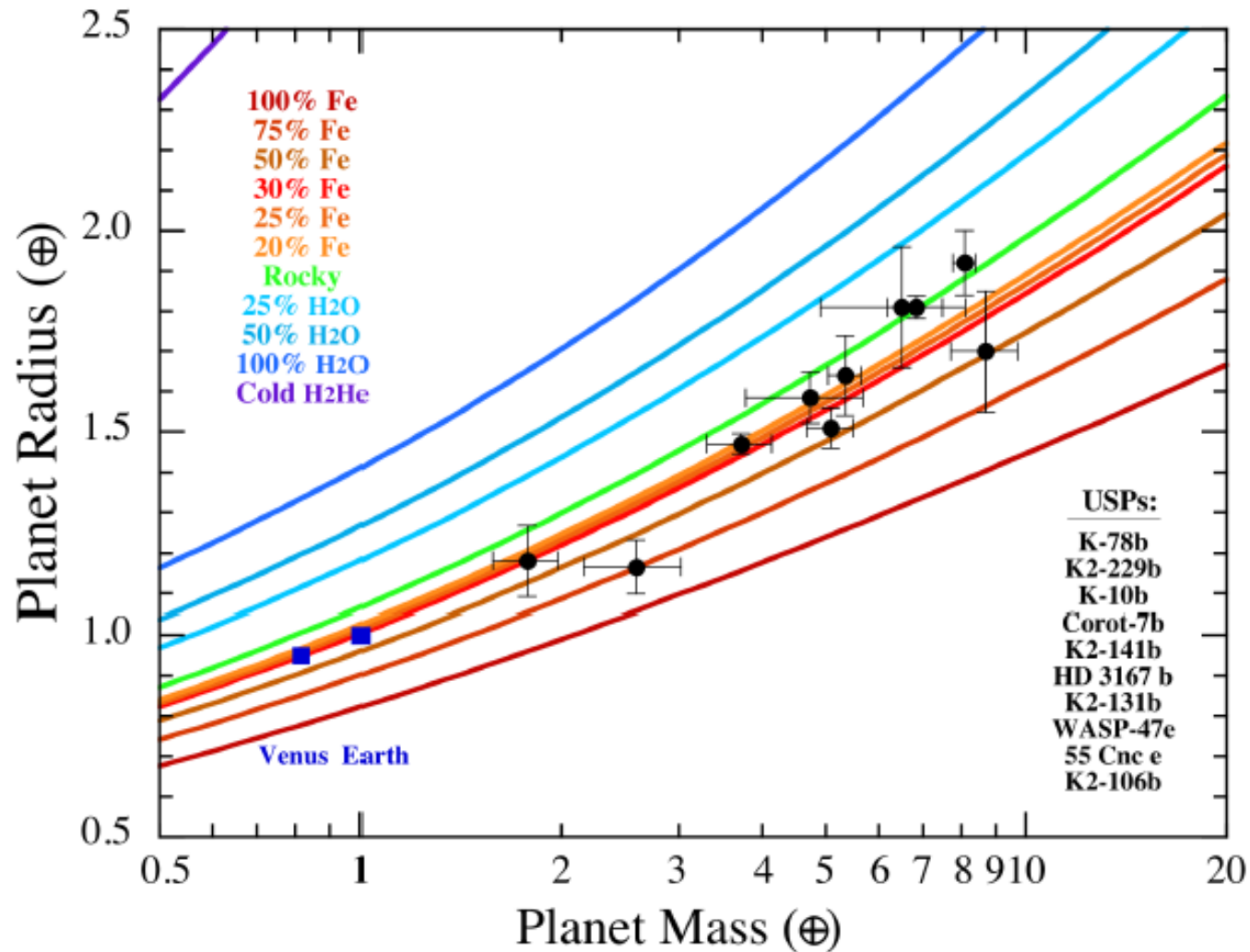
- Small planets often called Lava worlds
- Orbital periods < 1 day
- Very close to host stars
- Very high surface temperature



Winn et al 2020 <https://arxiv.org/pdf/1803.03303.pdf>

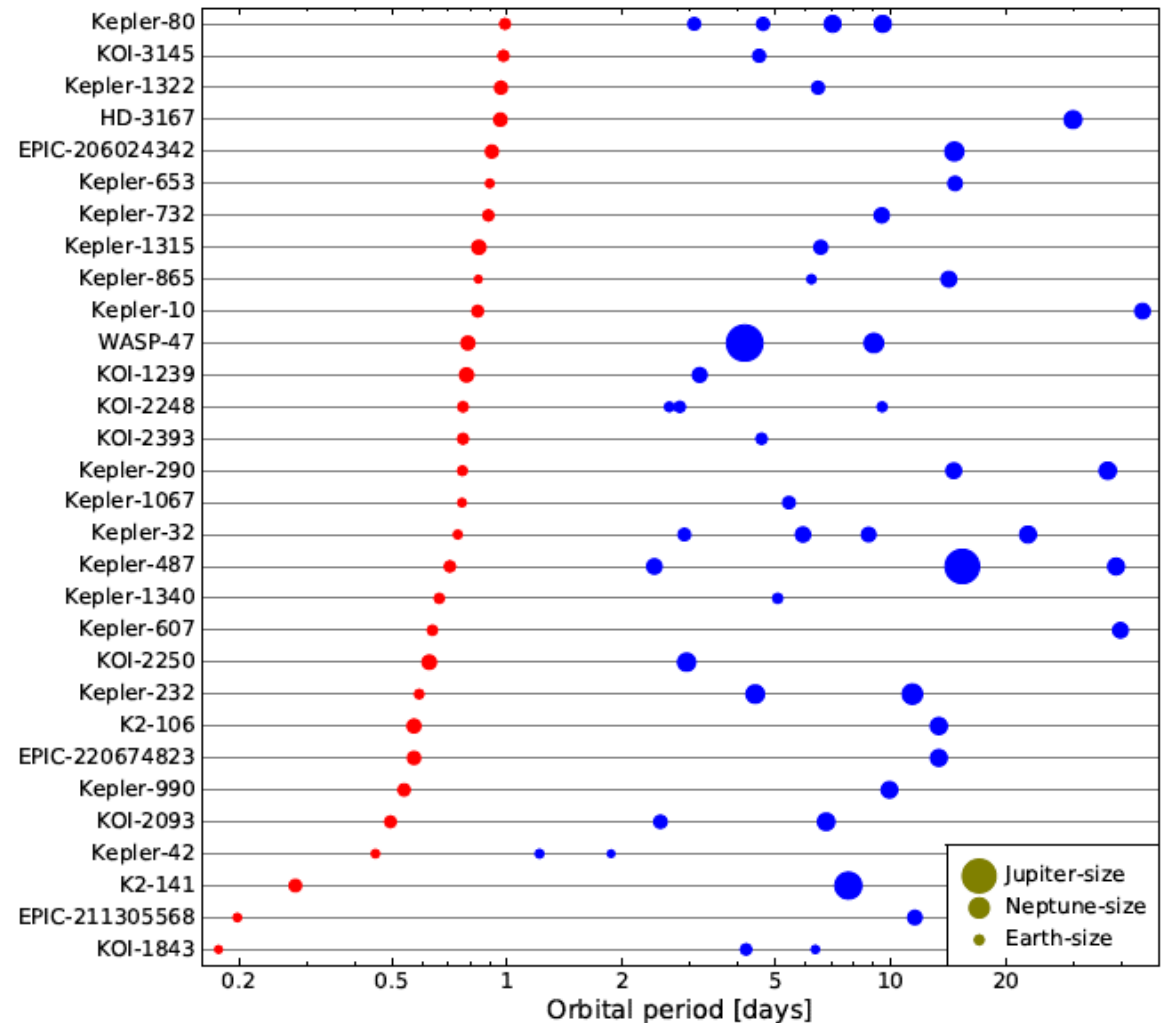


# Composition of USPs



# Architecture of USP systems

- USP resides usually in a system with more planets
- USP is less frequent with HJ planets (only Wasp-47 system)
- system)



Winn et al 2020 <https://arxiv.org/pdf/1803.03303.pdf>

# Formation scenarios

- In-situ – leads usually to several Super-Earth planets in the warm part of the disc
- Migrating through the disc towards inner part (infrequent )
- Migrating giants provide material for the USP (Wasp-47?)
- Tidal circularization – however most USPs are with companions
- Stripping the giant planet of their envelope once they migrate too close to the star

# Ultra-short planets

- See TESS USP

Vanderspeck et al. 2018,

<https://arxiv.org/abs/1809.07242>

How about small planets?

# Terrestrial planets

- They could form in-situ by accretion
- They could form with “help” of migrating giants
- They could form by circularization of orbits
- They could form by evaporation of gas from large inward migrating planets

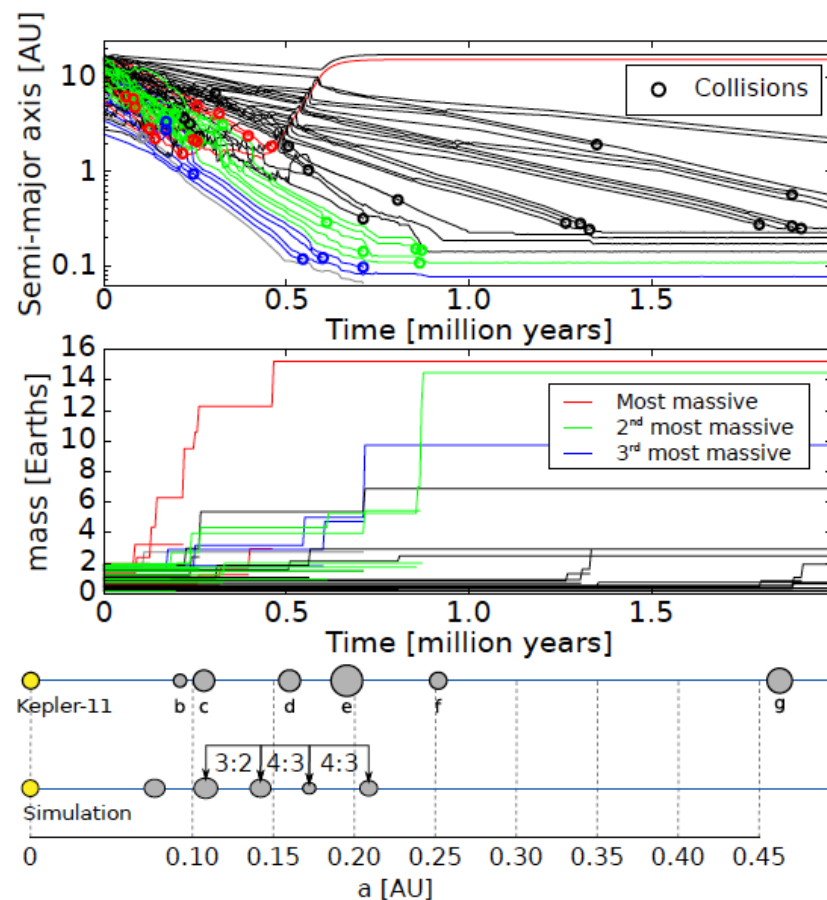


Fig. 6.— Formation of a system of hot Super Earths by type I migration. The top panel shows the evolution of the embryos’ orbital radii and the bottom panel shows the mass growth. The red, green and blue curves represent embryos that coagulated into the three most massive planets. All other bodies are in black. Only the most massive (red) planet grew large enough to trigger outward migration before crossing into a zone of pure inward migration. From *Cossou et al.* (2013).

And what do observations tell us?

# How frequent are gas giants?

- The rate of Jupiter-sized planets around GFK stars is estimated to be around 1%

Wright et al. 2012,

<https://arxiv.org/pdf/1205.2273.pdf>

- Are smaller planets more frequent?
- Jupiter-sized planets on long periodic orbits have a frequency of about 14% - see next slides.



# Planet frequency

- We have now larger data set
- HARPS and CORALIE data
- Planets are quite frequent, at least every second star (FGK) has at least one planet

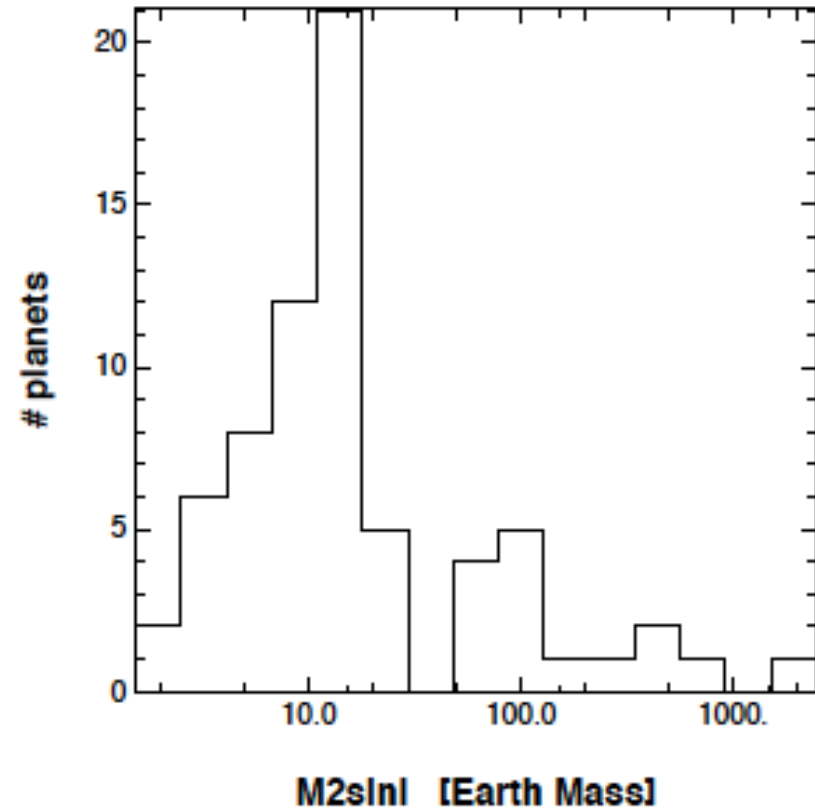
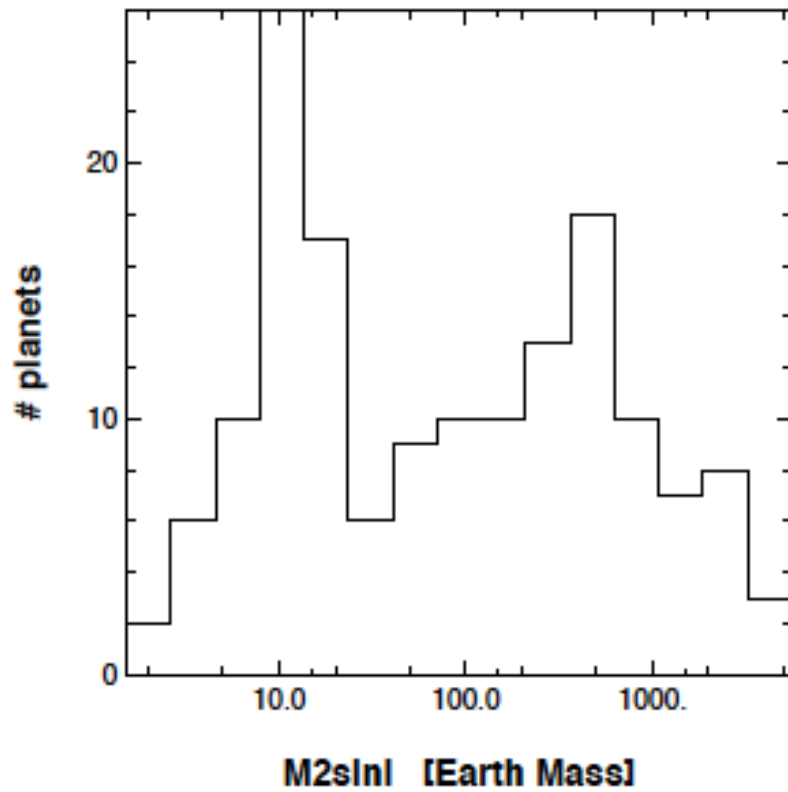
**Table 1.** Occurrence frequency of stars with at least one planet in the defined region. The results for various regions of the  $m_2 \sin i - \log P$  plane are given.

Mass limits	Period limit	Planetary rate based on published planets	Planetary rate including candidates	Comments
$> 50 M_{\oplus}$	$< 10$ years	$13.9 \pm 1.7$ %	$13.9 \pm 1.7$ %	Gaseous giant planets
$> 100 M_{\oplus}$	$< 10$ years	$9.7 \pm 1.3$ %	$9.7 \pm 1.3$ %	Gaseous giant planets
$> 50 M_{\oplus}$	$< 11$ days	$0.89 \pm 0.36$ %	$0.89 \pm 0.36$ %	Hot gaseous giant planets
Any masses	$< 10$ years	$65.2 \pm 6.6$ %	$75.1 \pm 7.4$ %	All "detectable" planets with $P < 10$ years
Any masses	$< 100$ days	$50.6 \pm 7.4$ %	$57.1 \pm 8.0$ %	At least 1 planet with $P < 100$ days
Any masses	$< 100$ days	$68.0 \pm 11.7$ %	$68.9 \pm 11.6$ %	F and G stars only
Any masses	$< 100$ days	$41.1 \pm 11.4$ %	$52.7 \pm 13.2$ %	K stars only
$< 30 M_{\oplus}$	$< 100$ days	$47.9 \pm 8.5$ %	$54.1 \pm 9.1$ %	Super-Earths and Neptune-mass planets on tight orbits
$< 30 M_{\oplus}$	$< 50$ days	$38.8 \pm 7.1$ %	$45.0 \pm 7.8$ %	As defined in Lovis et al. (2009)

Mayor et al 2012, A&A, <https://arxiv.org/pdf/1109.2497.pdf>

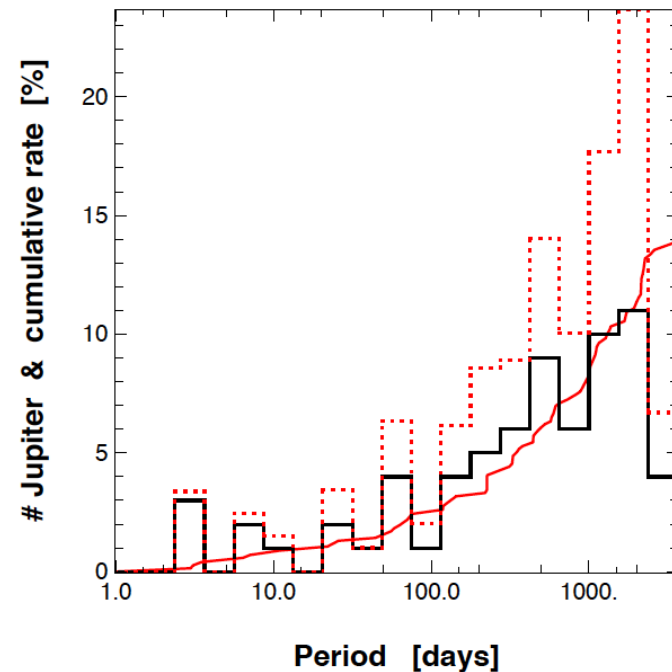
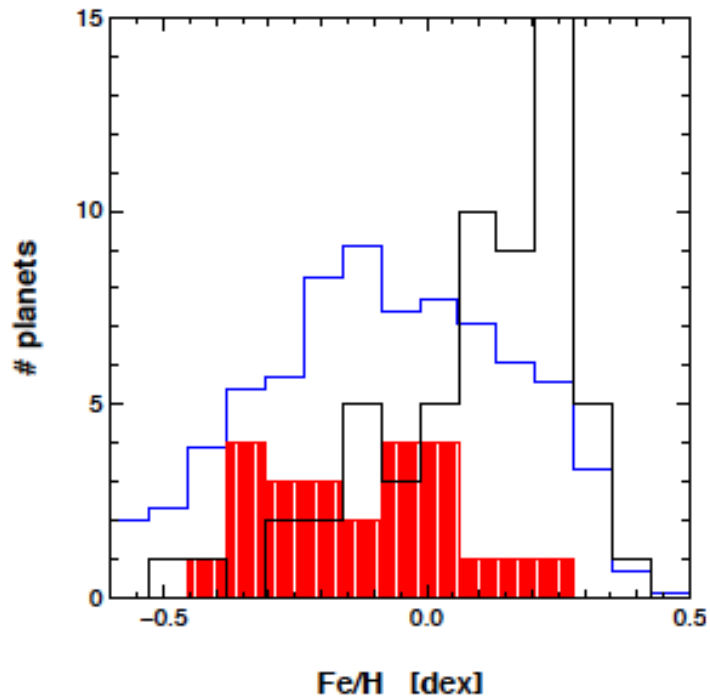
# Small planets vs. large planets

- Left: low mass vs. High mass, right: same but only for short periodic planets less than 100 days



# Small vs. Large

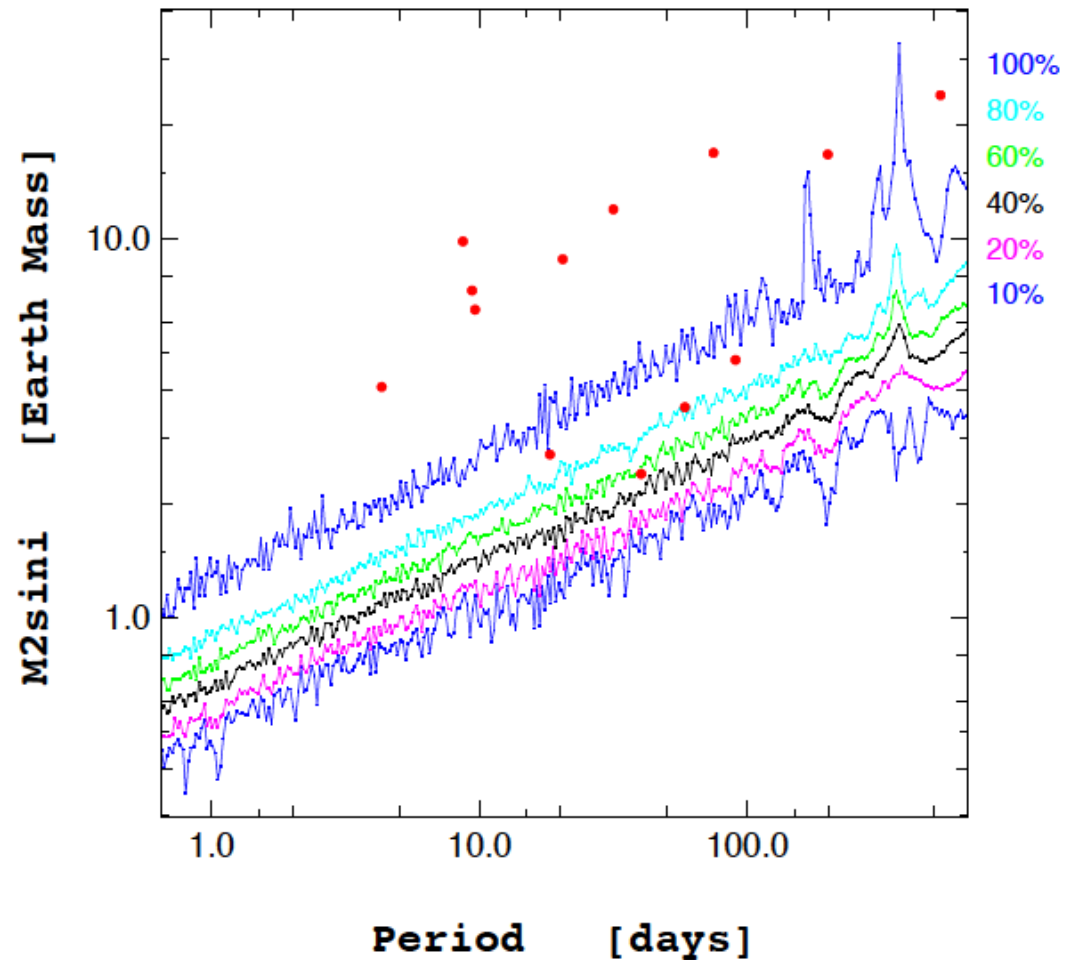
- Metallicity of the system is a factor
- Large planets favor large metallicities
- Smaller planets are abundant also with lower metallicities



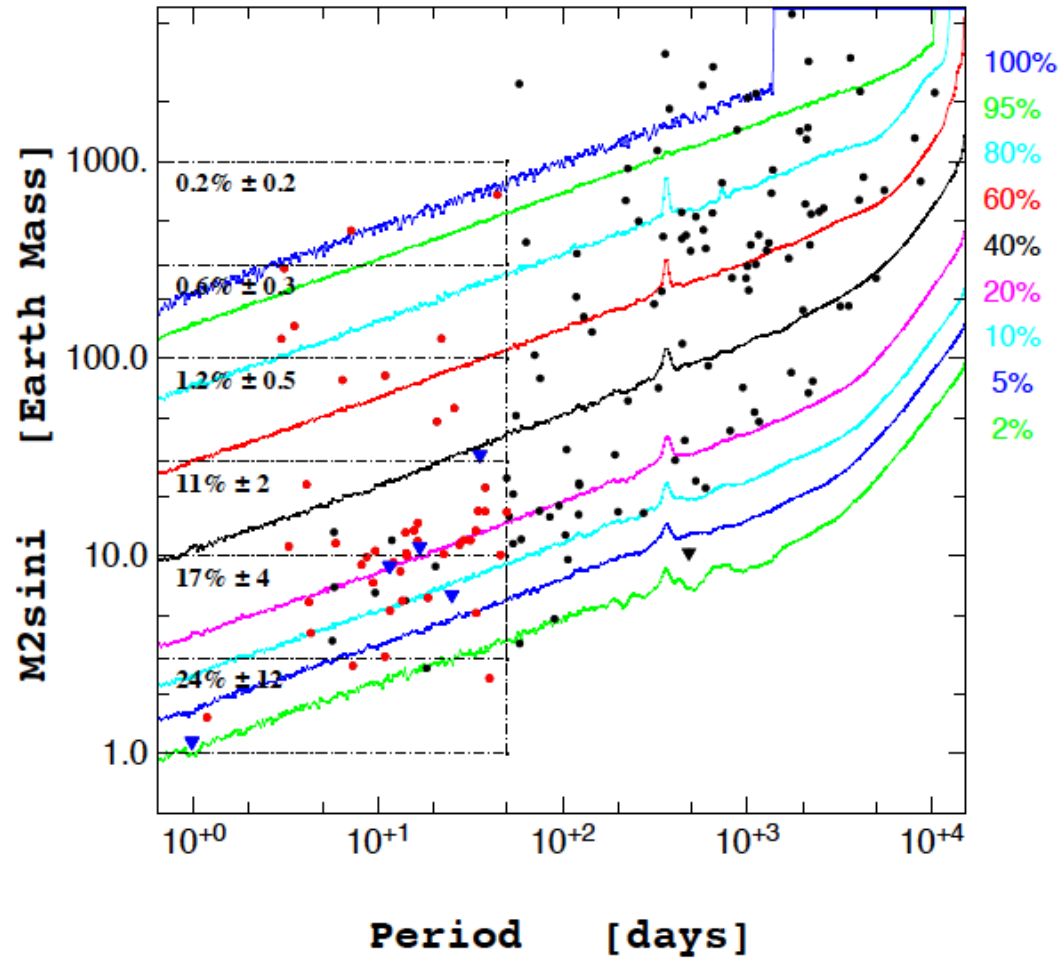
Mayor et al 2012, A&A,

# Small planets frequency

- Sample of 10 stars hosting 29 planets
- Sensitivity to detect 10 M Earth planet is close to 100%
- A 3 M Earth planet sensitivity is about 20%
- ESPRESSO is here now



# We have pretty good chances!



Mayor et al 2012, A&A,  
<https://arxiv.org/pdf/1109.2497.pdf>

# Next week(s)

- Composition of exoplanets
- Interesting exoplanetary systems
- Looking for the Solar System analogue
- Exoatmospheres